



**LIFE Integrated Water Resources Management
Task Order No. 802
EPIQ II: Contract No. EPP-T-802-03-00013-00**

**Task 5: Environmental Services for Improving
Water Quality Management**

Sinbo Village Household Survey

Report No. 6

April 2005



**LIFE Integrated Water Resources Management
Task Order No. 802
EPIQ II: Contract No. EPP-T-802-03-00013-00**

**Task 5: Environmental Services for Improving
Water Quality Management**

Sinbo Village Household Survey

Report No. 6

***Prepared by:
Eng. Ismail Hamdy***

April 2005

Table of Contents

List of Figures and Tables.....	iii
Figures	iii
Tables.....	iv
Abbreviations and Acronyms	VIII
Acknowledgements.....	viii
1. Introduction.....	1
Background.....	1
Objectives	1
Survey Methodology.....	1
Survey Sample	1
2. Main Findings	3
Solid Waste	3
Sanitation	6
Water.....	7
Appendix 1: Survey Questionnaire.....	A-1
Appendix 2: Data Analysis	B-1

List of Figures and Tables

Figures

Figure 1	Survey Profile by Gender	2
Figure 2	Survey Profile by Educational Status	3
Figure 3	Educational Status of Heads of Households Surveyed	4
Figure 4	Main Problems Caused by Poor Solid Waste Collection.....	5
Figure 5	Methods of Disposing of Household Solid Waste.....	5
Figure 6	Elements of a Sustainable Solid Waste Collection System	6

Tables

Table 1	Is Rubbish a Problem in Your Village/Street?	B-1
Table 2	Are You Satisfied with the Current Situation for Dealing with Waste in Your Village?.....	B-1
Table 3	What Problem Caused by Rubbish Do You Most Dislike?.....	B-1
Table 4	What is the Next Biggest Problem Caused by Rubbish?.....	B-2
Table 5	Are the Streets in Your Village Clean?	B-2
Table 6	Are Health Problems Caused by Wastes in the Streets?.....	B-2
Table 7	Do Neighbors Fight about Wastes Dumped in the Streets?.....	B-3
Table 8	How Do You Usually Dispose of Your Household Wastes?	B-3
Table 9	Who Normally Disposes of Your Household Wastes?.....	B-3
Table 10	Who Else Might Dispose of Your Household Wastes?.....	B-4
Table 11	What Time of Day Do You Dispose of Your Household Wastes?	B-4
Table 12	How Many Times Do You Dispose of Household Wastes Each Week?	B-4
Table 13	Are You Familiar with the CDA?.....	B-4
Table 14	Are You Willing to Put Your Household Wastes in Trash Bags?.....	B-5
Table 15	When Would You Like Trash Bags Collected?	B-5
Table 16	What is Most Important to Make a New Solid Waste Management System Sustainable?.....	B-5
Table 17	What is the Next Most Important Thing to Do to Sustain the New SWM System?.....	B-6
Table 18	What is the Third Most Important Thing to Do to Sustain the New SWM System?.....	B-6
Table 19	Who Should Receive Complaints about the System?.....	B-7
Table 20	Would You Participate in a CDA-organized Community Clean-up?.....	B-7
Table 21	Do You Pay Private Household Waste Collectors?.....	B-7
Table 22	How Much Do You Pay for Private Trash Collection, per Month?	B-8
Table 23	Are You Willing to Pay More for Enhanced Services?.....	B-8
Table 24	Would You Subsidize Payments for the Poorest Residents?.....	B-8
Table 25	Should People be Fined for Dumping Wastes?	B-8
Table 26	Do You Dispose of Household Sewage and Wastewater Down the Toilet?..	B-9
Table 27	Do You Dispose of Household Sewage and Wastewater in the Yard outside Your House?.....	B-9
Table 28	Do You Dispose of Household Sewage and Wastewater in the Street outside Your House?.....	B-9
Table 29	Do You Dispose of Household Sewage and Wastewater into Canals or Drainage Canals outside Your House?	B-10
Table 30	Do You Dispose of Household Sewage and Wastewater onto Nearby Agricultural Land?.....	B-10
Table 31	Do You Dispose of Household Sewage and Wastewater in Other Ways? ...	B-10
Table 32	What Sanitation Facilities Do You Have in Your House?	B-11
Table 33	Who is Responsible to Desludge or Unblock Your Wastewater System?....	B-11
Table 34	How Often Do You Have the System Desludged or Unblocked?.....	B-12
Table 35	What Does it Cost (L.E.) to Desludge or Unblock the System Each Time?	B-12
Table 36	How Long (in minutes) Does it Take to Remove Blockages?	B-12
Table 37	Who Empties Wastewater Liquids?.....	B-12
Table 38	How Often is Wastewater Emptied?.....	B-13

Table 39	How Much (L.E.) Does it Cost to Empty the Wastewater?.....	B-13
Table 40	How Long (in minutes) Does it Take to Empty the Wastewater?	B-13
Table 41	Do You Share this System with Other Households?	B-13
Table 42	Is Desludging Done when Wastewater has been Emptied?.....	B-14
Table 43	Are You Satisfied with your Current Sanitation System?	B-14
Table 44	What is the Biggest Problem You, Your Family, and the Village Face because of the Current Sanitation System?	B-14
Table 45	What is the Next Biggest Problem You, Your Family, and the Village Face because of the Current Sanitation System?	B-15
Table 46	What is the Third Biggest Problem You, Your Family, and the Village Face because of the Current Sanitation System?	B-16
Table 47	What is the Fourth Biggest Problem You, Your Family, and the Village Face because of the Current Sanitation System?	B-17
Table 48	Are You Willing to Contribute Financially to the CDA Sanitation Project?	B-18
Table 49	How Much Did You Pay (L.E.)?.....	B-18
Table 50	How Much are You Willing to Pay for Sanitation Service?.....	B-18
Table 51	What is Your Main Reason for Not Paying?.....	B-19
Table 52	What is the Next Most Important Reason You Would Not Pay for an Improved Sanitation System?	B-19
Table 53	What is the Third Most Important Reason You Would Not Pay for an Improved Sanitation System?	B-20
Table 54	What is the Age of the Father in the Household?.....	B-20
Table 55	Has the Father been Ill with a Sanitation/Wasterwater-related Disease within the Past 2 Weeks?	B-21
Table 56	What is the Age of the Mother in the Household?	B-21
Table 57	Has the Mother been Ill with a Sanitation/Wasterwater-related Disease within the Past 2 Weeks?	B-23
Table 58	How Old is the Oldest Son in the Household?	B-23
Table 59	Has the Oldest Son been Ill with a Sanitation/Wasterwater-related Disease within the Past 2 Weeks?.....	B-24
Table 60	How Old is the Next Son in the Household?.....	B-24
Table 61	Has the Second Son been Ill with a Sanitation/Wasterwater-related Disease within the Past 2 Weeks?.....	B-25
Table 62	How Old is the Third Son in the Household?.....	B-25
Table 63	Has the Third Son been Ill with a Sanitation/Wasterwater-related Disease within the Past 2 Weeks?.....	B-26
Table 64	How Old is the Fourth Son in the Household?	B-26
Table 65	Has the Fourth Son been Ill with a Sanitation/Wasterwater-related Disease within the Past 2 Weeks?.....	B-27
Table 66	How Old is the Fifth Son in the Household?.....	B-27
Table 67	Has the Fifth Son been Ill with a Sanitation/Wasterwater-related Disease within the Past 2 Weeks?.....	B-27
Table 68	How Old is the Eldest Daughter in the Household?	B-27
Table 69	Has the Eldest Daughter been Ill with a Sanitation/Wasterwater-related Disease within the Past 2 Weeks?.....	B-28
Table 70	How Old is the Next Daughter in the Household?	B-29
Table 71	Has the Next Daughter been Ill with a Sanitation/Wasterwater-related Disease within the Past 2 Weeks?.....	B-29
Table 72	How Old is the Third Daughter in the Household?	B-30

Table 73	Has the Third Daughter been Ill with a Sanitation/Wasterwater-related Disease within the Past 2 Weeks?.....	B-30
Table 74	How Old is the Fourth Daughter in the Household?	B-30
Table 75	Has the Fourth Daughter been Ill with a Sanitation/Wasterwater-related Disease within the Past 2 Weeks?.....	B-31
Table 76	How Old is the Fifth Daughter in the Household?	B-31
Table 77	Has the Fifth Daughter been Ill with a Sanitation/Wasterwater-related Disease within the Past 2 Weeks?.....	B-31
Table 78	Do You Know about Sanitation/Wastewater-related Diseases?.....	B-31
Table 79	Where Did You Get this Information (option 1)?	B-32
Table 80	Where Did You Get this Information (option 2)?	B-32
Table 81	Where Did You Get this Information (option 3)?	B-32
Table 82	Do You Drink Tap Water?	B-33
Table 83	Do You Cook with Tap Water?.....	B-33
Table 84	Do You Use Tap Water for Bathing and Washing?	B-33
Table 85	Do You Use Tap Water to Clean Food?.....	B-33
Table 86	Do You Use Tap Water for Washing Dishes?.....	B-34
Table 87	Do You Use Tap Water to Wash Clothes?	B-34
Table 88	Do You Use Tap Water for Housecleaning?	B-34
Table 89	Do You Use Tap Water for Sprinkling the Street?.....	B-34
Table 90	Do You Use Tap Water to Flush the Toilet?	B-34
Table 91	Do You Use Tap Water for Other Activities?	B-35
Table 92	Is the Water Supply Regular?.....	B-35
Table 93	How Many Times, on Average per Month, is the Water Supply Interrupted?.....	B-35
Table 94	How Long does Each Interruption Last?	B-35
Table 95	In Total, How Many Hours of Water Interruption Occur in the Summer Season?.....	B-36
Table 96	On Average, How Many Times is the Water Interrupted during the Winter Months?	B-36
Table 97	In the Winter, How Many Hours is the Water Off Each Time?	B-37
Table 98	In Winter, How Many Total Hours is the Water Interrupted?.....	B-37
Table 99	In One Year, How Many Total Hours is the Water Interrupted?	B-38
Table 100	What is Your First Choice as a Substitute for Tap Water?.....	B-39
Table 101	Percent of Residents Using that Option.....	B-39
Table 102	For Your First Choice as a Substitute to Tap Water, How Long Does it Take You to Make the Trip for Water?	B-40
Table 103	What is Your Second Choice as a Substitute for Tap Water?	B-40
Table 104	Percent of Residents Using the Second Option	B-40
Table 105	For Your Second Choice as a Substitute to Tap Water, How Long Does it Take You to Make the Trip for Water?	B-41
Table 106	How Often do You Make the Trip for Water?	B-41
Table 107	What Problems are there with Your First Choice as a Substitute for Tap Water?	B-41
Table 108	What Problems are there with Your Second Choice as a Substitute for Tap Water?	B-42
Table 109	What Problems are there with Your Third Choice as a Substitute for Tap Water?.....	B-42
Table 110	Do You Have an Electric Water Pump?.....	B-43

Table 111	How Much are You Willing to Pay for Improved Water Service?.....	B-43
Table 112	On Average, How Much Do You Pay Each Month for Water?	B-43
Table 113	On What Kind of Street is Your House?	B-44
Table 114	What is Your Sex?.....	B-44
Table 115	Are You the Head of the Household?.....	B-44
Table 116	What is the Highest Level of Education You Have Completed?	B-45
Table 117	What is the Highest Level of Education Completed by the Head of the Household?	B-45
Table 118	How Many People Live in the Household?	B-45
Table 119	How Many Households are in the Dwelling?.....	B-46
Table 120	What Type of House is the Dwelling?.....	B-46

Abbreviations and Acronyms

BCWUA	Branch Canal Water Users Association
CDA	Community Development Association
IAS	Irrigation Advisory Service
IWMD	Integrated Water Management District
IWRM	Integrated Water Resources Management
MOE	Ministry of Education
MWRI	Ministry of Water Resources & Irrigation
USAID	United States Agency for International Development

Acknowledgements

In appreciation to all those who participated in making this survey, especially Ms. Sonia El-Tahan, Survey Supervisor; Ms. Shimaa Ahmed Shosha, Ms. Amira El-Sayed Abdel-Hamid, Ms. Asmaa Adel Basa, and Ms. Samah Samy Ahmed, Survey Enumerators.

1. Introduction

Background

This report summarizes findings of a survey made in Sinbo Village, Gharbia Governorate, Egypt. The survey focused on three main areas of concern in the village: solid waste, sanitation, and potable water.

Objectives

The survey aimed to assist in:

- Understanding the status of environmental services—including solid waste collection, sanitation, and water quality and access—in Sinbo Village
- Gauging residents' satisfaction with these services
- Understanding the impact on people's health and social life when environmental services are poor
- Assessing the extent of citizens' awareness about the role of Community Development Associations (CDAs)
- Estimating residents' willingness to pay for better environmental services.

Survey Methodology

The survey used a structured questionnaire technique. Two hundred and nine forms were completed in meetings between the surveyor and the head of a household in Sinbo Village. A copy of the Arabic questionnaire used is included as appendix 1.

The survey asked questions concerning:

- Views about solid waste, sanitation, and water supply and quality in the village
- Levels of existing services and people's willingness to pay more for improvements
- Awareness of the role of CDAs.

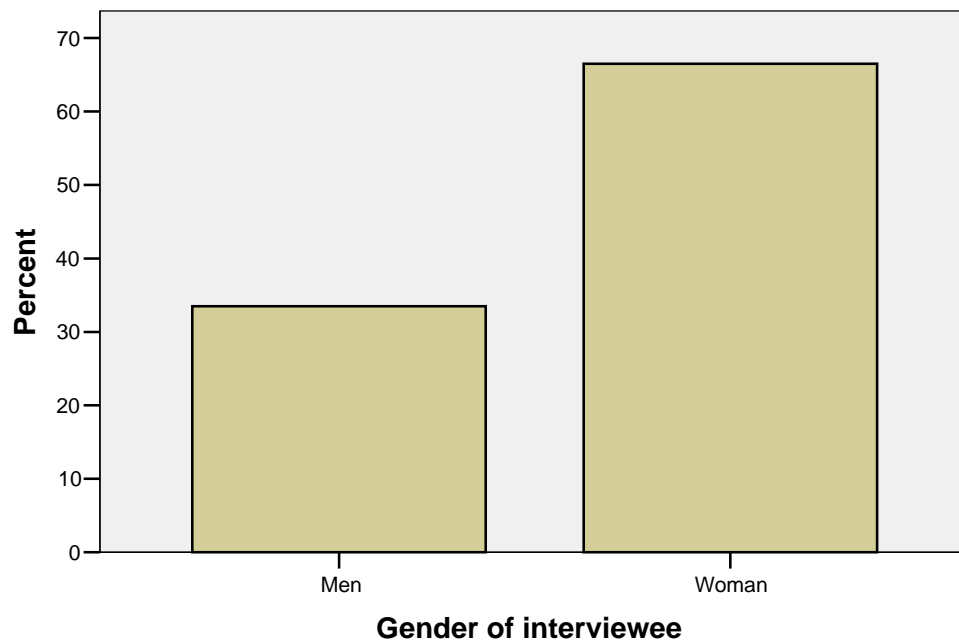
Survey Sample

A representative demographic cross-section of people living in the village were included in the survey, disaggregated by gender, level of education, and type of housing. The demographic profile for those surveyed is shown below and an analysis of the data collected is included as appendix 2.

Place and Type of Housing—The survey showed that 44 percent were living on main streets, 45 percent on side streets, and 11 percent in lanes. The type of houses included in the survey were 54.6 percent rural houses and 45.4 percent were buildings with flats.

Gender and Head of Household—Figure 1 shows that 33.5 percent of those surveyed were men, 66.5 percent were women, and 31.1 percent of those surveyed were heads of households.

Figure 1 Survey Profile by Gender



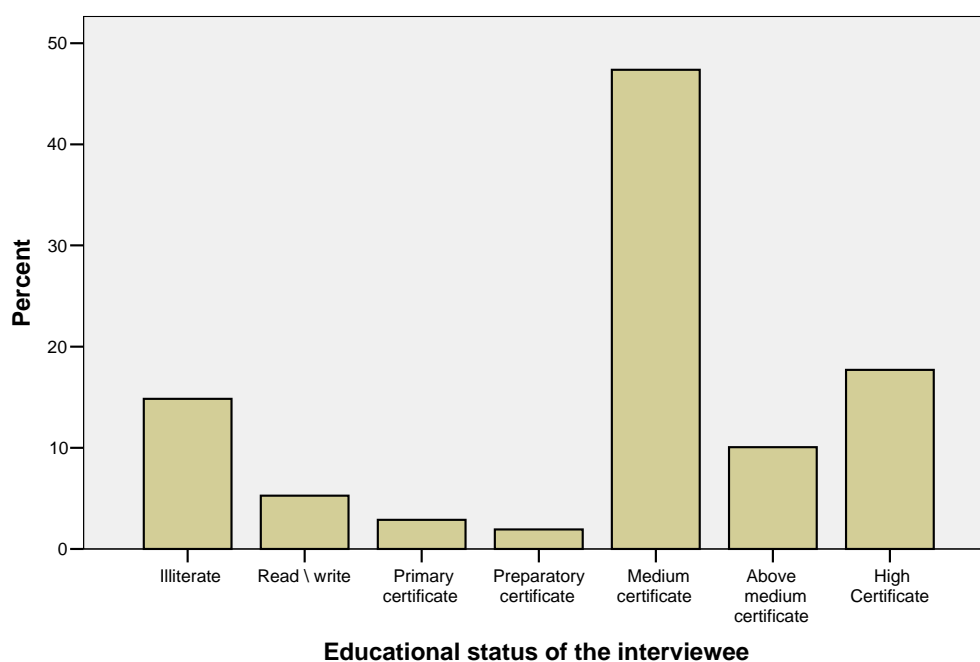
Level of Education—Figure 2 shows that 15 percent of those interviewed in the survey were illiterate. The highest number of those interviewed (47.4 percent) had completed their secondary education, 17.7 percent had completed university. Thirty-two and a half percent of heads of households had completed secondary education while only 3 percent had only attended primary school, as shown in figure 3.

2. Main Findings

The main findings from this report demonstrate that the people in Sinbo village, Gharbia Governorate, have strong opinions that are important, and these should be taken into account in plans to implement service projects in the village. Some of these views are given below:

1. People care deeply about improving environmental services, particularly solid waste, sanitation, and quality of and access to potable water

Figure 2 Survey Profile by Educational Status

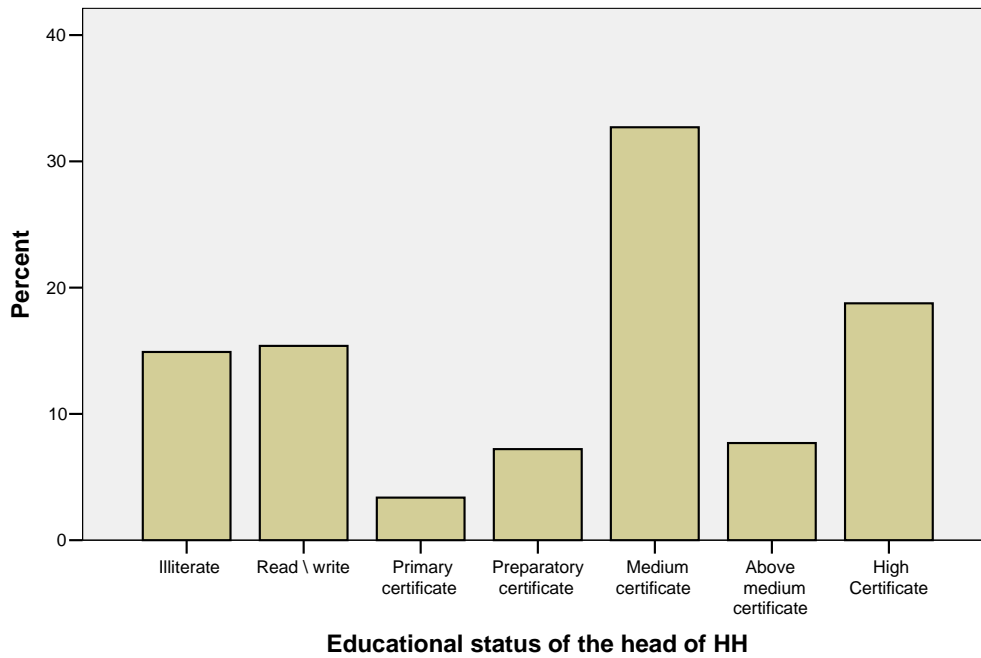


2. About 50 percent of the people surveyed were aware of the role of the CDA
3. People are willing to pay more money for improved environmental services.

Solid Waste

Problem

- Ninety-nine percent of people surveyed cited waste as a problem.
- Nearly all (96.7 percent) are dissatisfied with the current waste collection service and 99 percent say the streets are dirty.

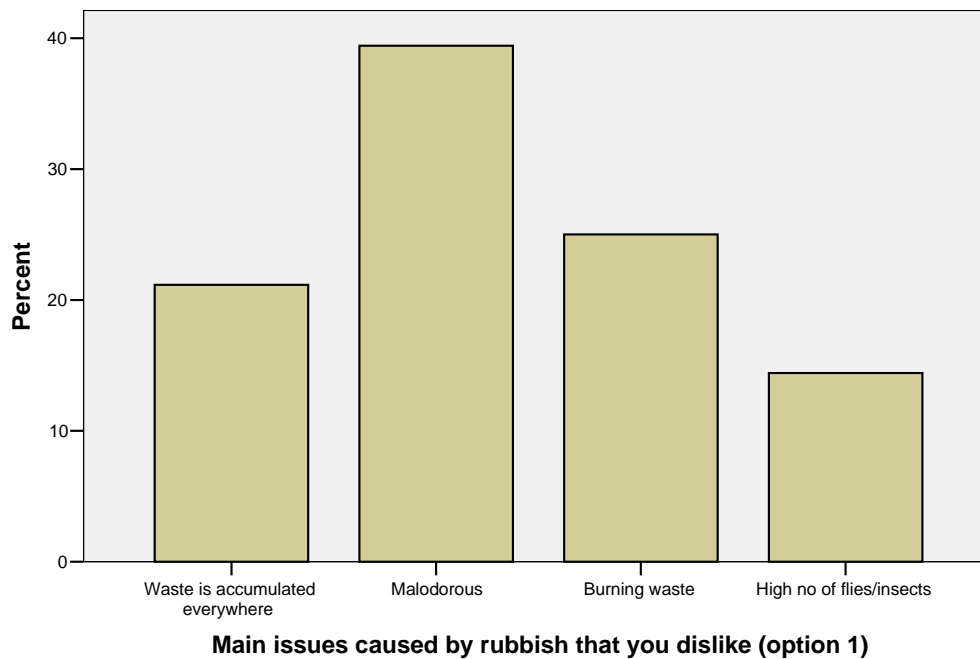
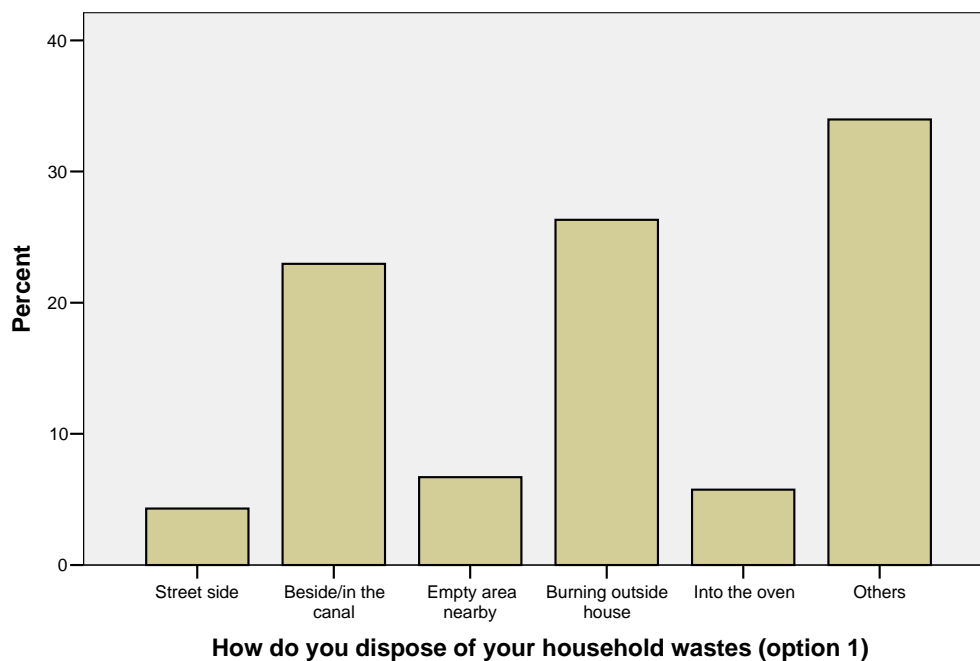
Figure 3 Educational Status of Heads of Households Surveyed

Impacts of the Solid Waste Problem

- When choosing the main problem caused by poor solid waste collection, more than one-third (39.4 percent) said it was bad odors, followed by burning waste (25 percent), waste accumulation (21.2 percent) and breeding conditions for flies and insects (14.4 percent), as shown in figure 4
- Nearly two-thirds (62 percent) said flies and insects were the next biggest problem, while 10.1 percent said it was health problems
- Nearly all (92.8 percent) said that accumulation of wastes in the streets caused health problems
- Almost half (44 percent) believe that dumping trash in the street may cause disputes among neighbors.

Waste Disposal

- As figure 5 shows, more than one-fourth of those surveyed (26.3 percent) burn waste outside their homes, 23 percent dispose of wastes in canals, 6.7 percent dispose of waste in vacant lots; however, most join the waste collection service
- Housewives are responsible for waste disposal in 72.7 percent of households
- Most people—77 percent—dispose of waste in the morning
- Nearly half of those surveyed (44.2 percent) dispose of waste twice a week, followed by 40.4 percent disposing of waste on a daily basis.

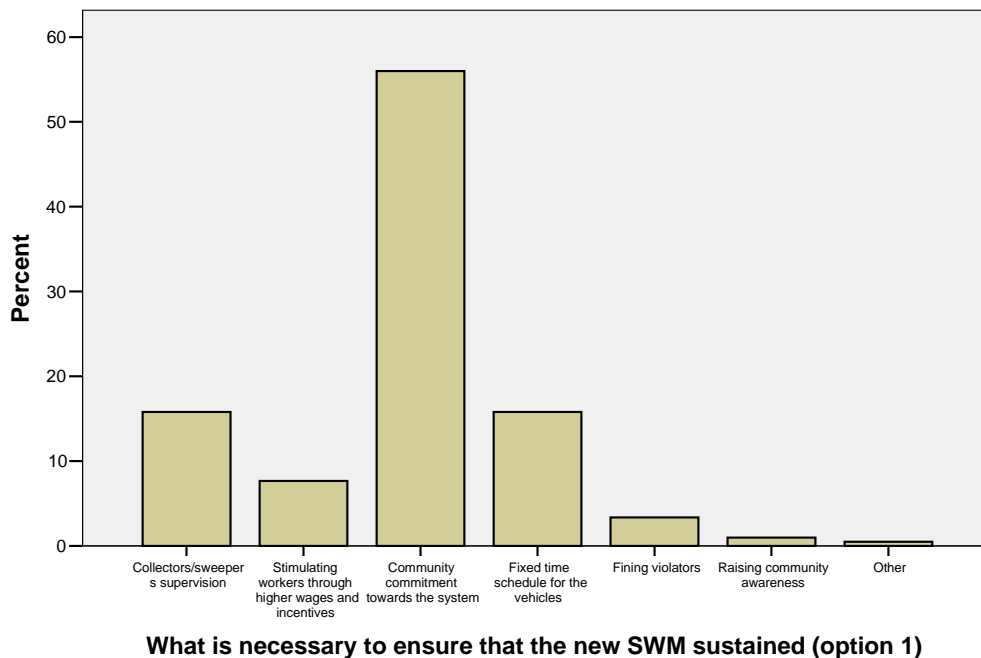
Figure 4 Main Problems Caused by Poor Solid Waste Collection**Figure 5 Methods of Disposing of Household Solid Waste**

The Community Development Association and Sustainable Waste Collection

- More than half of those surveyed—52.2 percent—have no knowledge about the CDA and its activities
- Nearly all (96.2 percent) are willing to collect house waste in bags, and 79.5 percent say that from 6 a.m. to 2 p.m. is the best time for collecting the bags

- People say that the three main procedures for a sustainable solid waste collection system are (1) community commitment to the system, (2) a fixed time schedule for vehicles and bag collection, and (3) raising community awareness
- Most people surveyed (83.7 percent) think that the CDA is the responsible authority for receiving complaints
- Eighty-nine and a half percent of those surveyed are willing to participate in village clean-up campaigns organized by the CDA
- More than half (55.8 percent) are willing to pay L.E.3 a month for the service
- More than 98 percent said they would pay fees that would subsidize the poorest people in the village
- More than 94 percent of villagers surveyed agreed that there should be fines for dumping waste.

Figure 6 Elements of a Sustainable Solid Waste Collection System



Sanitation

Sanitation Facilities and Wastewater Disposal

- Two-thirds of villagers surveyed (65.7 percent) were connected to the community network emptying into a drainage canal
- Slightly more (68.8 percent) share the sanitation system with other houses
- About 87 percent dispose of wastewater in toilets.

Problems

- More than half of those surveyed (55.6 percent) were dissatisfied with the sanitation system they had
- Twenty-one percent of the villagers surveyed cited the spread of insects and flies and the cost of emptying septic tanks, pollution and bad smells (22.6 percent), water leaking into and weakening walls (16.2 percent), and general environmental pollution (26.7 percent) as main problems caused by the current sanitary system.

Willingness to Pay for Enhanced Service

- More than three-fourths (82.1 percent) of those surveyed said they were willing to contribute financially to the CDA sanitation project
- Nearly one-third (31.8 percent) indicated willingness to pay L.E.10 per month for the sanitation service.

Water**Water Use**

- The majority of the people surveyed (98.1 percent) use water for drinking, cooking, bathing, washing fruit and vegetables, cleaning dishes and clothes, cleaning their homes, and flushing toilets.

Problems

- Half of those surveyed complained that their water supply was irregular
- Most (94.7 percent) do not have an electric motor to pump water
- Nearly three-quarters (71.3 percent) use stored water as a substitute for tap water, but 54.5 percent said they faced problems with the water's bad quality, odor, and taste.

Willingness to Pay for Enhanced Service

- Nearly one-third (31.3 percent) of those surveyed said they would be willing to pay L.E.10 per month for improved service; however, 59.1 percent did not indicate whether they would be willing to pay for water service.

Appendix 2: Data Analysis

Table 1 Is Rubbish a Problem in Your Village/Street?

		Frequency	Percent	Valid Percent	Cumulative Percent
Valid	Yes	207	99.0	99.0	99.0
	No	2	1.0	1.0	100.0
	Total	209	100.0	100.0	

Table 2 Are You Satisfied with the Current Situation for Dealing with Waste in Your Village?

		Frequency	Percent	Valid Percent	Cumulative Percent
Valid	Yes	7	3.3	3.3	3.3
	No	202	96.7	96.7	100.0
	Total	209	100.0	100.0	

Table 3 What Problem Caused by Rubbish Do You Most Dislike?

		Frequency	Percent	Valid Percent	Cumulative Percent
Valid	Waste accumulates everywhere	44	21.1	21.2	21.2
	Bad odors	82	39.2	39.4	60.6
	Burning waste	52	24.9	25.0	85.6
	Too many flies/insects	30	14.4	14.4	100.0
	Total	208	99.5	100.0	
Missing	System	1	.5		
Total		209	100.0		

Table 4 What is the Next Biggest Problem Caused by Rubbish?

		Frequency	Percent	Valid Percent	Cumulative Percent
Valid	Waste is accumulated everywhere	1	.5	.5	.5
	Malodorous	16	7.7	7.7	8.2
	Burning waste	13	6.2	6.3	14.4
	High no of flies/insects	129	61.7	62.0	76.4
	Animal waste accumulation	14	6.7	6.7	83.2
	Canals are polluted by waste	14	6.7	6.7	89.9
	Health issues	21	10.0	10.1	100.0
	Total	208	99.5	100.0	
Missing	System	1	.5		
	Total	209	100.0		

Table 5 Are the Streets in Your Village Clean?

		Frequency	Percent	Valid Percent	Cumulative Percent
Valid	Yes	2	1.0	1.0	1.0
	No	206	98.6	99.0	100.0
	Total	208	99.5	100.0	
Missing	System	1	.5		
	Total	209	100.0		

Table 6 Are Health Problems Caused by Wastes in the Streets?

		Frequency	Percent	Valid Percent	Cumulative Percent
Valid	Yes	194	92.8	92.8	92.8
	No	15	7.2	7.2	100.0
	Total	209	100.0	100.0	

Table 7 Do Neighbors Fight about Wastes Dumped in the Streets?

		Frequency	Percent	Valid Percent	Cumulative Percent
Valid	Never	24	11.5	11.5	11.5
	Sometimes	92	44.0	44.0	55.5
	Often	87	41.6	41.6	97.1
	All the time	6	2.9	2.9	100.0
	Total	209	100.0	100.0	

Table 8 How Do You Usually Dispose of Your Household Wastes?

		Frequency	Percent	Valid Percent	Cumulative Percent
Valid	Street side	9	4.3	4.3	4.3
	Beside/in the canal	48	23.0	23.0	27.3
	Empty area nearby	14	6.7	6.7	34.0
	Burning outside house	55	26.3	26.3	60.3
	Into the oven	12	5.7	5.7	66.0
	Others	71	34.0	34.0	100.0
	Total	209	100.0	100.0	

Table 9 Who Normally Disposes of Your Household Wastes?

		Frequency	Percent	Valid Percent	Cumulative Percent
Valid	Husband	43	20.6	20.6	20.6
	Wife	152	72.7	72.7	93.3
	Son	8	3.8	3.8	97.1
	Daughter	5	2.4	2.4	99.5
	Other	1	.5	.5	100.0
	Total	209	100.0	100.0	

Table 10 Who Else Might Dispose of Your Household Wastes?

		Frequency	Percent	Valid Percent	Cumulative Percent
Valid	Husband	2	1.0	1.3	1.3
	Wife	34	16.3	21.8	23.1
	Son	44	21.1	28.2	51.3
	Daughter	74	35.4	47.4	98.7
	Other	2	1.0	1.3	100.0
	Total	156	74.6	100.0	
Missing	System	53	25.4		
Total		209	100.0		

Table 11 What Time of Day Do You Dispose of Your Household Wastes?

		Frequency	Percent	Valid Percent	Cumulative Percent
Valid	In the morning	161	77.0	77.0	77.0
	In the afternoon	38	18.2	18.2	95.2
	At night	10	4.8	4.8	100.0
	Total	209	100.0	100.0	

Table 12 How Many Times Do You Dispose of Household Wastes Each Week?

		Frequency	Percent	Valid Percent	Cumulative Percent
Valid	Once	7	3.3	3.4	3.4
	Twice	92	44.0	44.2	47.6
	Three times	25	12.0	12.0	59.6
	Every day	84	40.2	40.4	100.0
	Total	208	99.5	100.0	
Missing	System	1	.5		
Total		209	100.0		

Table 13 Are You Familiar with the CDA?

		Frequency	Percent	Valid Percent	Cumulative Percent
Valid	Yes	100	47.8	47.8	47.8
	No	109	52.2	52.2	100.0
	Total	209	100.0	100.0	

Table 14 Are You Willing to Put Your Household Wastes in Trash Bags?

		Frequency	Percent	Valid Percent	Cumulative Percent
Valid	Yes	200	95.7	96.2	96.2
	No	8	3.8	3.8	100.0
	Total	208	99.5	100.0	
Missing	System	1	.5		
	Total	209	100.0		

Table 15 When Would You Like Trash Bags Collected?

		Frequency	Percent	Valid Percent	Cumulative Percent
Valid	6:00 a.m. – 2:00 p.m.	163	78.0	79.5	79.5
	2:00 p.m. – 6:00 p.m.	38	18.2	18.5	98.0
	6:00 p.m. – 6:00 a.m.	4	1.9	2.0	100.0
	Total	205	98.1	100.0	
Missing	System	4	1.9		
	Total	209	100.0		

Table 16 What is Most Important to Make a New Solid Waste Management System Sustainable?

		Frequency	Percent	Valid Percent	Cumulative Percent
Valid	Collectors/ sweepers supervised	33	15.8	15.8	15.8
	Stimulating workers through higher wages and incentives	16	7.7	7.7	23.4
	Community commitment towards the system	117	56.0	56.0	79.4
	Fixed time schedule for vehicles and pickup	33	15.8	15.8	95.2
	Fining violators	7	3.3	3.3	98.6

	Frequency	Percent	Valid Percent	Cumulative Percent
Raising community awareness	2	1.0	1.0	99.5
Other	1	.5	.5	100.0
Total	209	100.0	100.0	

Table 17 What is the Next Most Important Thing to Do to Sustain the New SWM System?

	Frequency	Percent	Valid Percent	Cumulative Percent
Valid Collectors/ sweepers supervised	1	.5	.5	.5
Stimulating workers through higher wages and incentives	4	1.9	1.9	2.4
Community commitment towards the system	22	10.5	10.5	12.9
Fixed time schedule for the vehicles and pickup	97	46.4	46.4	59.3
Fining violators	53	25.4	25.4	84.7
Raising community awareness	30	14.4	14.4	99.0
Other	2	1.0	1.0	100.0
Total	209	100.0	100.0	

Table 18 What is the Third Most Important Thing to Do to Sustain the New SWM System?

	Frequency	Percent	Valid Percent	Cumulative Percent
Valid Community commitment to the system	6	2.9	3.0	3.0
Fixed time schedule for the vehicles and pickup	28	13.4	13.9	16.9

	Frequency	Percent	Valid Percent	Cumulative Percent
Fining violators	37	17.7	18.4	35.3
Raising community awareness	127	60.8	63.2	98.5
Other	3	1.4	1.5	100.0
Total	201	96.2	100.0	
Missing System	8	3.8		
Total	209	100.0		

Table 19 Who Should Receive Complaints about the System?

	Frequency	Percent	Valid Percent	Cumulative Percent
Valid Waste collection supervisor	23	11.0	11.1	11.1
CDA	174	83.3	83.7	94.7
Local administration unit	10	4.8	4.8	99.5
Other	1	.5	.5	100.0
Total	208	99.5	100.0	
Missing System	1	.5		
Total	209	100.0		

Table 20 Would You Participate in a CDA-organized Community Clean-up?

	Frequency	Percent	Valid Percent	Cumulative Percent
Valid Yes	187	89.5	89.5	89.5
No	22	10.5	10.5	100.0
Total	209	100.0	100.0	

Table 21 Do You Pay Private Household Waste Collectors?

	Frequency	Percent	Valid Percent	Cumulative Percent
Valid Yes	76	36.4	36.7	36.7
No	131	62.7	63.3	100.0
Total	207	99.0	100.0	
Missing System	2	1.0		
Total	209	100.0		

Table 22 How Much Do You Pay for Private Trash Collection, per Month?

		Frequency	Percent	Valid Percent	Cumulative Percent
Valid	3.00	1	.5	1.4	1.4
	3.50	72	34.4	98.6	100.0
	Total	73	34.9	100.0	
Missing	System	136	65.1		
	Total	209	100.0		

Table 23 Are You Willing to Pay More for Enhanced Services?

L.E. per Month		Frequency	Percent	Valid Percent	Cumulative Percent
Valid	1.00	22	10.5	10.6	10.6
	2.00	35	16.7	16.8	27.4
	3.00	116	55.5	55.8	83.2
	5.00	24	11.5	11.5	94.7
	10.00	5	2.4	2.4	97.1
	50.00	6	2.9	2.9	100.0
	Total	208	99.5	100.0	
	Missing	System	1	.5	
Total		209	100.0		

Table 24 Would You Subsidize Payments for the Poorest Residents?

		Frequency	Percent	Valid Percent	Cumulative Percent
Valid	Yes	194	92.8	92.8	92.8
	No	15	7.2	7.2	100.0
	Total	209	100.0	100.0	

Table 25 Should People be Fined for Dumping Wastes?

		Frequency	Percent	Valid Percent	Cumulative Percent
Valid	Yes	197	94.3	94.3	94.3
	No	12	5.7	5.7	100.0
	Total	209	100.0	100.0	

Table 26 Do You Dispose of Household Sewage and Wastewater Down the Toilet?

		Frequency	Percent	Valid Percent	Cumulative Percent
Valid	1	4	1.9	2.0	2.0
	10	1	.5	.5	2.5
	30	2	1.0	1.0	3.5
	40	1	.5	.5	4.0
	50	3	1.4	1.5	5.4
	60	2	1.0	1.0	6.4
	70	3	1.4	1.5	7.9
	80	6	2.9	3.0	10.9
	85	1	.5	.5	11.4
	90	1	.5	.5	11.9
	97	1	.5	.5	12.4
	99	1	.5	.5	12.9
	100	176	84.2	87.1	100.0
	Total	202	96.7	100.0	
Missing	System	7	3.3		
Total	209	100.0			

Table 27 Do You Dispose of Household Sewage and Wastewater in the Yard outside Your House?

		Frequency	Percent	Valid Percent	Cumulative Percent
Valid	1	2	1.0	28.6	28.6
	30	1	.5	14.3	42.9
	50	1	.5	14.3	57.1
	100	3	1.4	42.9	100.0
	Total	7	3.3	100.0	
Missing	System	202	96.7		
Total	209	100.0			

Table 28 Do You Dispose of Household Sewage and Wastewater in the Street outside Your House?

		Frequency	Percent	Valid Percent	Cumulative Percent
Valid	3	2	1.0	8.7	8.7
	10	1	.5	4.3	13.0
	20	6	2.9	26.1	39.1
	25	1	.5	4.3	43.5
	30	2	1.0	8.7	52.2

	Frequency	Percent	Valid Percent	Cumulative Percent
40	1	.5	4.3	56.5
50	2	1.0	8.7	65.2
60	1	.5	4.3	69.6
70	2	1.0	8.7	78.3
85	1	.5	4.3	82.6
100	4	1.9	17.4	100.0
Total	23	11.0	100.0	
Missing System	186	89.0		
Total	209	100.0		

Table 29 Do You Dispose of Household Sewage and Wastewater into Canals or Drainage Canals outside Your House?

	Frequency	Percent	Valid Percent	Cumulative Percent
Valid 20	1	.5	20.0	20.0
40	1	.5	20.0	40.0
70	1	.5	20.0	60.0
75	1	.5	20.0	80.0
100	1	.5	20.0	100.0
Total	5	2.4	100.0	
Missing System	204	97.6		
Total	209	100.0		

Table 30 Do You Dispose of Household Sewage and Wastewater onto Nearby Agricultural Land?

	Frequency	Percent	Valid Percent	Cumulative Percent
Valid 10	1	.5	100.0	100.0
Missing System	208	99.5		
Total	209	100.0		

Table 31 Do You Dispose of Household Sewage and Wastewater in Other Ways?

	Frequency	Percent
Missing System	209	100.0

Table 32 What Sanitation Facilities Do You Have in Your House?

		Frequency	Percent	Valid Percent	Cumulative Percent
Valid	Defecate outside the house	1	.5	.5	.5
	In-house container emptied elsewhere	2	1.0	1.0	1.5
	Pour flush latrine with pipe going into canal	1	.5	.5	2.0
	P/F/L/W/P going into concrete/metal/holding/septic tank	13	6.2	6.4	8.3
	P/F/L/ going into unlined bayara/pit/soak away	53	25.4	26.0	34.3
	Community network drain into tile drainage	134	64.1	65.7	100.0
	Total	204	97.6	100.0	
Missing	System	5	2.4		
	Total	209	100.0		

Table 33 Who is Responsible to Desludge or Unblock Your Wastewater System?

		Frequency	Percent	Valid Percent	Cumulative Percent
Valid	Worker	39	18.7	90.7	90.7
	interviewee	4	1.9	9.3	100.0
	Total	43	20.6	100.0	
Missing	System	166	79.4		
	Total	209	100.0		

Table 34 How Often Do You Have the System Desludged or Unblocked?

		Frequency	Percent	Valid Percent	Cumulative Percent
Valid	1	38	18.2	88.4	88.4
	2	5	2.4	11.6	100.0
	Total	43	20.6	100.0	
Missing	System	166	79.4		
	Total	209	100.0		

Table 35 What Does it Cost (L.E.) to Desludge or Unblock the System Each Time?

		Frequency	Percent	Valid Percent	Cumulative Percent
Valid	3	1	.5	2.5	2.5
	3	3	1.4	7.5	10.0
	5	26	12.4	65.0	75.0
	6	2	1.0	5.0	80.0
	7	2	1.0	5.0	85.0
	8	1	.5	2.5	87.5
	10	5	2.4	12.5	100.0
	Total	40	19.1	100.0	
Missing	System	169	80.9		
	Total	209	100.0		

Table 36 How Long (in minutes) Does it Take to Remove Blockages?

		Frequency	Percent	Valid Percent	Cumulative Percent
Valid	30	4	1.9	100.0	100.0
Missing	System	205	98.1		
	Total	209	100.0		

Table 37 Who Empties Wastewater Liquids?

		Frequency	Percent	Valid Percent	Cumulative Percent
Valid	Worker	39	18.7	90.7	90.7
	Interviewee	4	1.9	9.3	100.0
	Total	43	20.6	100.0	
Missing	System	166	79.4		
	Total	209	100.0		

Table 38 How Often is Wastewater Emptied?

		Frequency	Percent	Valid Percent	Cumulative Percent
Valid	1	38	18.2	88.4	88.4
	2	5	2.4	11.6	100.0
	Total	43	20.6	100.0	
Missing	System	166	79.4		
	Total	209	100.0		

Table 39 How Much (L.E.) Does it Cost to Empty the Wastewater?

L.E.		Frequency	Percent	Valid Percent	Cumulative Percent
Valid	3	1	.5	2.6	2.6
	3	3	1.4	7.7	10.3
	5	25	12.0	64.1	74.4
	6	2	1.0	5.1	79.5
	7	2	1.0	5.1	84.6
	8	1	.5	2.6	87.2
	10	5	2.4	12.8	100.0
	Total	39	18.7	100.0	
Missing	System	170	81.3		
	Total	209	100.0		

Table 40 How Long (in minutes) Does it Take to Empty the Wastewater?

		Frequency	Percent	Valid Percent	Cumulative Percent
Valid	30	4	1.9	100.0	100.0
Missing	System	205	98.1		
	Total	209	100.0		

Table 41 Do You Share this System with Other Households?

		Frequency	Percent	Valid Percent	Cumulative Percent
Valid	Yes	132	63.2	68.8	68.8
	No	60	28.7	31.3	100.0
	Total	192	91.9	100.0	
Missing	System	17	8.1		
	Total	209	100.0		

Table 42 Is Desludging Done when Wastewater has been Emptied?

		Frequency	Percent	Valid Percent	Cumulative Percent
Valid	Yes	39	18.7	81.3	81.3
	No	9	4.3	18.8	100.0
	Total	48	23.0	100.0	
Missing	System	161	77.0		
	Total	209	100.0		

Table 43 Are You Satisfied with your Current Sanitation System?

		Frequency	Percent	Valid Percent	Cumulative Percent
Valid	Yes	91	43.5	44.4	44.4
	No	114	54.5	55.6	100.0
	Total	205	98.1	100.0	
Missing	System	4	1.9		
	Total	209	100.0		

Table 44 What is the Biggest Problem You, Your Family, and the Village Face because of the Current Sanitation System?

		Frequency	Percent	Valid Percent	Cumulative Percent
Valid	Cost of desludging/emptying	29	13.9	21.0	21.0
	Illness/disease	13	6.2	9.4	30.4
	Pollution of drinking water	7	3.3	5.1	35.5
	Wastewater enters low level houses	7	3.3	5.1	40.6
	Implications for social standing/pride	2	1.0	1.4	42.0
	Spread of insects/flies	29	13.9	21.0	63.0
	Pollution/smell of canals	4	1.9	2.9	65.9
	Pollution/smell on the street	14	6.7	10.1	76.1
	Overflow into the street	13	6.2	9.4	85.5

	Frequency	Percent	Valid Percent	Cumulative Percent
Leakage into walls/ threatening house safety	5	2.4	3.6	89.1
Blockages and need to remove them	14	6.7	10.1	99.3
Danger to farmers	1	.5	.7	100.0
Total	138	66.0	100.0	
Missing System	71	34.0		
Total	209	100.0		

Table 45 What is the Next Biggest Problem You, Your Family, and the Village Face because of the Current Sanitation System?

	Frequency	Percent	Valid Percent	Cumulative Percent
Valid Cost of desludging/ emptying tanks	1	.5	.7	.7
Illness/disease	5	2.4	3.6	4.4
Pollution of drinking water	1	.5	.7	5.1
Wastewater enters low level houses	5	2.4	3.6	8.8
Implications for social standing/pride	4	1.9	2.9	11.7
Spread of insects/flies	15	7.2	10.9	22.6
Pollution/smell of canals	4	1.9	2.9	25.5
Pollution/smell on the street	31	14.8	22.6	48.2
Overflow into the street	21	10.0	15.3	63.5
Overflow into the house	8	3.8	5.8	69.3
Leakage into walls/ threat to houses safety	12	5.7	8.8	78.1
Blockages/ removing them	11	5.3	8.0	86.1

	Frequency	Percent	Valid Percent	Cumulative Percent
Agricultural land pollution	15	7.2	10.9	97.1
Environmental pollution	2	1.0	1.5	98.5
Disputes among neighbors	1	.5	.7	99.3
Other	1	.5	.7	100.0
Total	137	65.6	100.0	
Missing System	72	34.4		
Total	209	100.0		

Table 46 What is the Third Biggest Problem You, Your Family, and the Village Face because of the Current Sanitation System?

	Frequency	Percent	Valid Percent	Cumulative Percent
Valid Spread of insects/flies	7	3.3	5.1	5.1
Pollution/smell of canals	7	3.3	5.1	10.3
Pollution/smell on the street	11	5.3	8.1	18.4
Overflow into the street	20	9.6	14.7	33.1
Overflow into the houses	7	3.3	5.1	38.2
Harassment of women	1	.5	.7	39.0
Leakage into walls/ threatening house safety	22	10.5	16.2	55.1
Blockages/ removing them	22	10.5	16.2	71.3
Agricultural land pollution	6	2.9	4.4	75.7
Danger to farmers	16	7.7	11.8	87.5
Environmental pollution	11	5.3	8.1	95.6
Disputes among neighbors	5	2.4	3.7	99.3

	Frequency	Percent	Valid Percent	Cumulative Percent
Other	1	.5	.7	100.0
Total	136	65.1	100.0	
Missing System	73	34.9		
Total	209	100.0		

Table 47 What is the Fourth Biggest Problem You, Your Family, and the Village Face because of the Current Sanitation System?

	Frequency	Percent	Valid Percent	Cumulative Percent
Valid Cost of desludging/ emptying tanks	1	.5	.8	.8
Spread of insects/flies	4	1.9	3.1	3.8
Pollution/smell of canals	1	.5	.8	4.6
Pollution/smell on the street	7	3.3	5.3	9.9
Overflow into the street	16	7.7	12.2	22.1
Overflow into the house	2	1.0	1.5	23.7
Leakages into walls/ threatening house safety	12	5.7	9.2	32.8
Blockages/ removing them	24	11.5	18.3	51.1
Agricultural land pollution	5	2.4	3.8	55.0
Danger to farmers	4	1.9	3.1	58.0
Environmental pollution	35	16.7	26.7	84.7
Disputes among neighbors	19	9.1	14.5	99.2
Other	1	.5	.8	100.0
Total	131	62.7	100.0	
Missing System	78	37.3		
Total	209	100.0		

Table 48 Are You Willing to Contribute Financially to the CDA Sanitation Project?

		Frequency	Percent	Valid Percent	Cumulative Percent
Valid	Yes	170	81.3	82.1	82.1
	No	31	14.8	15.0	97.1
	Actually did	1	.5	.5	97.6
	I don't know	5	2.4	2.4	100.0
	Total	207	99.0	100.0	
Missing	System	2	1.0		
	Total	209	100.0		

Table 49 How Much Did You Pay (L.E.)?

		Frequency	Percent	Valid Percent	Cumulative Percent
Valid	250.00	1	.5	100.0	100.0
Missing	System	208	99.5		
	Total	209	100.0		

Table 50 How Much are You Willing to Pay for Sanitation Service?

L.E.		Frequency	Percent	Valid Percent	Cumulative Percent
Valid	.00	63	30.1	31.3	31.3
	1.00	2	1.0	1.0	32.3
	4.00	1	.5	.5	32.8
	10.00	64	30.6	31.8	64.7
	20.00	24	11.5	11.9	76.6
	40.00	14	6.7	7.0	83.6
	60.00	14	6.7	7.0	90.5
	80.00	1	.5	.5	91.0
	100.00	13	6.2	6.5	97.5
	200.00	4	1.9	2.0	99.5
	250.00	1	.5	.5	100.0
	Total	201	96.2	100.0	
	Missing	System	8	3.8	
Total		209	100.0		

Table 51 What is Your Main Reason for Not Paying?

		Frequency	Percent	Valid Percent	Cumulative Percent
Valid	Cannot afford payment	29	13.9	42.0	42.0
	The water authority should provide a free main line	2	1.0	2.9	44.9
	Trying to keep charges as low as possible	12	5.7	17.4	62.3
	Satisfied with my system	3	1.4	4.3	66.7
	I do not make decisions about money	18	8.6	26.1	92.8
	Other	5	2.4	7.2	100.0
	Total	69	33.0	100.0	
Missing	System	140	67.0		
	Total	209	100.0		

Table 52 What is the Next Most Important Reason You Would Not Pay for an Improved Sanitation System?

		Frequency	Percent	Valid Percent	Cumulative Percent
Valid	The water authority should provide a free main line	2	1.0	25.0	25.0
	Trying to keep charges as low as possible	1	.5	12.5	37.5
	Satisfied with my system	1	.5	12.5	50.0
	I do not make decisions about money	3	1.4	37.5	87.5
	Other	1	.5	12.5	100.0
	Total	8	3.8	100.0	
Missing	System	201	96.2		
	Total	209	100.0		

Table 53 What is the Third Most Important Reason You Would Not Pay for an Improved Sanitation System?

		Frequency	Percent	Valid Percent	Cumulative Percent
Valid	We already pay enough to the government	2	1.0	100.0	100.0
Missing	System	207	99.0		
	Total	209	100.0		

Table 54 What is the Age of the Father in the Household?

		Frequency	Percent	Valid Percent	Cumulative Percent
Valid	26	1	.5	.5	.5
	27	4	1.9	2.1	2.6
	29	4	1.9	2.1	4.7
	30	1	.5	.5	5.2
	31	6	2.9	3.1	8.3
	32	3	1.4	1.6	9.8
	33	2	1.0	1.0	10.9
	34	3	1.4	1.6	12.4
	35	4	1.9	2.1	14.5
	36	3	1.4	1.6	16.1
	37	1	.5	.5	16.6
	38	6	2.9	3.1	19.7
	39	3	1.4	1.6	21.2
	40	18	8.6	9.3	30.6
	41	6	2.9	3.1	33.7
	42	4	1.9	2.1	35.8
	43	11	5.3	5.7	41.5
	44	6	2.9	3.1	44.6
	45	13	6.2	6.7	51.3
	46	2	1.0	1.0	52.3
	47	6	2.9	3.1	55.4
	48	4	1.9	2.1	57.5
	49	5	2.4	2.6	60.1
	50	10	4.8	5.2	65.3
	51	3	1.4	1.6	66.8
	52	9	4.3	4.7	71.5
	53	4	1.9	2.1	73.6
	54	4	1.9	2.1	75.6
	55	11	5.3	5.7	81.3

	Frequency	Percent	Valid Percent	Cumulative Percent
56	2	1.0	1.0	82.4
57	7	3.3	3.6	86.0
58	2	1.0	1.0	87.0
59	2	1.0	1.0	88.1
60	7	3.3	3.6	91.7
61	1	.5	.5	92.2
62	3	1.4	1.6	93.8
64	2	1.0	1.0	94.8
66	1	.5	.5	95.3
67	2	1.0	1.0	96.4
70	5	2.4	2.6	99.0
74	1	.5	.5	99.5
85	1	.5	.5	100.0
Total	193	92.3	100.0	
Missing System	16	7.7		
Total	209	100.0		

Table 55 Has the Father been Ill with a Sanitation/Wasterwater-related Disease within the Past 2 Weeks?

	Frequency	Percent	Valid Percent	Cumulative Percent
Valid Yes	4	1.9	2.1	2.1
No	185	88.5	97.9	100.0
Total	189	90.4	100.0	
Missing System	20	9.6		
Total	209	100.0		

Table 56 What is the Age of the Mother in the Household?

	Frequency	Percent	Valid Percent	Cumulative Percent
Valid 13	1	.5	.5	.5
18	1	.5	.5	1.0
20	1	.5	.5	1.4
22	4	1.9	1.9	3.4
23	1	.5	.5	3.9
24	3	1.4	1.4	5.3
25	6	2.9	2.9	8.2
26	4	1.9	1.9	10.1
28	5	2.4	2.4	12.6

	Frequency	Percent	Valid Percent	Cumulative Percent
29	3	1.4	1.4	14.0
30	12	5.7	5.8	19.8
31	8	3.8	3.9	23.7
32	4	1.9	1.9	25.6
33	5	2.4	2.4	28.0
34	4	1.9	1.9	30.0
35	16	7.7	7.7	37.7
36	7	3.3	3.4	41.1
37	5	2.4	2.4	43.5
38	5	2.4	2.4	45.9
39	4	1.9	1.9	47.8
40	12	5.7	5.8	53.6
41	8	3.8	3.9	57.5
42	7	3.3	3.4	60.9
43	6	2.9	2.9	63.8
45	16	7.7	7.7	71.5
46	3	1.4	1.4	72.9
47	3	1.4	1.4	74.4
48	8	3.8	3.9	78.3
49	2	1.0	1.0	79.2
50	9	4.3	4.3	83.6
51	3	1.4	1.4	85.0
52	4	1.9	1.9	87.0
53	4	1.9	1.9	88.9
54	1	.5	.5	89.4
55	6	2.9	2.9	92.3
57	1	.5	.5	92.8
58	1	.5	.5	93.2
60	3	1.4	1.4	94.7
61	2	1.0	1.0	95.7
62	1	.5	.5	96.1
64	1	.5	.5	96.6
65	4	1.9	1.9	98.6
67	1	.5	.5	99.0
70	1	.5	.5	99.5
80	1	.5	.5	100.0
Total	207	99.0	100.0	
Missing System	2	1.0		
Total	209	100.0		

Table 57 Has the Mother been Ill with a Sanitation/Wasterwater-related Disease within the Past 2 Weeks?

		Frequency	Percent	Valid Percent	Cumulative Percent
Valid	Yes	8	3.8	4.0	4.0
	No	193	92.3	96.0	100.0
	Total	201	96.2	100.0	
Missing	System	8	3.8		
	Total	209	100.0		

Table 58 How Old is the Oldest Son in the Household?

		Frequency	Percent	Valid Percent	Cumulative Percent
Valid	1	4	1.9	2.3	2.3
	2	4	1.9	2.3	4.6
	3	4	1.9	2.3	6.9
	4	1	.5	.6	7.5
	4	6	2.9	3.4	10.9
	5	3	1.4	1.7	12.6
	6	4	1.9	2.3	14.9
	7	4	1.9	2.3	17.2
	8	2	1.0	1.1	18.4
	9	3	1.4	1.7	20.1
	10	6	2.9	3.4	23.6
	11	11	5.3	6.3	29.9
	12	7	3.3	4.0	33.9
	13	6	2.9	3.4	37.4
	14	8	3.8	4.6	42.0
	15	4	1.9	2.3	44.3
	16	7	3.3	4.0	48.3
	17	10	4.8	5.7	54.0
	18	9	4.3	5.2	59.2
	19	3	1.4	1.7	60.9
	20	10	4.8	5.7	66.7
	21	5	2.4	2.9	69.5
	22	5	2.4	2.9	72.4
	23	5	2.4	2.9	75.3
	24	7	3.3	4.0	79.3
	25	6	2.9	3.4	82.8
	26	4	1.9	2.3	85.1
	27	7	3.3	4.0	89.1
	28	4	1.9	2.3	91.4
29	2	1.0	1.1	92.5	

	Frequency	Percent	Valid Percent	Cumulative Percent
30	3	1.4	1.7	94.3
31	1	.5	.6	94.8
32	1	.5	.6	95.4
34	2	1.0	1.1	96.6
35	1	.5	.6	97.1
38	1	.5	.6	97.7
40	1	.5	.6	98.3
42	1	.5	.6	98.9
45	1	.5	.6	99.4
46	1	.5	.6	100.0
Total	174	83.3	100.0	
Missing System	35	16.7		
Total	209	100.0		

Table 59 Has the Oldest Son been Ill with a Sanitation/Wasterwater-related Disease within the Past 2 Weeks?

	Frequency	Percent	Valid Percent	Cumulative Percent
Valid Yes	9	4.3	5.3	5.3
No	160	76.6	94.7	100.0
Total	169	80.9	100.0	
Missing System	40	19.1		
Total	209	100.0		

Table 60 How Old is the Next Son in the Household?

	Frequency	Percent	Valid Percent	Cumulative Percent
Valid 1	4	1.9	3.9	3.9
2	1	.5	1.0	4.9
2	5	2.4	4.9	9.7
3	3	1.4	2.9	12.6
4	2	1.0	1.9	14.6
5	4	1.9	3.9	18.4
6	5	2.4	4.9	23.3
7	2	1.0	1.9	25.2
8	2	1.0	1.9	27.2
9	2	1.0	1.9	29.1
10	5	2.4	4.9	34.0
11	5	2.4	4.9	38.8
12	5	2.4	4.9	43.7

	Frequency	Percent	Valid Percent	Cumulative Percent
13	5	2.4	4.9	48.5
14	2	1.0	1.9	50.5
15	2	1.0	1.9	52.4
16	5	2.4	4.9	57.3
17	5	2.4	4.9	62.1
18	5	2.4	4.9	67.0
19	5	2.4	4.9	71.8
20	2	1.0	1.9	73.8
21	4	1.9	3.9	77.7
22	4	1.9	3.9	81.6
23	4	1.9	3.9	85.4
24	5	2.4	4.9	90.3
25	1	.5	1.0	91.3
26	2	1.0	1.9	93.2
27	2	1.0	1.9	95.1
29	1	.5	1.0	96.1
30	1	.5	1.0	97.1
35	1	.5	1.0	98.1
38	1	.5	1.0	99.0
40	1	.5	1.0	100.0
Total	103	49.3	100.0	
Missing System	106	50.7		
Total	209	100.0		

Table 61 Has the Second Son been Ill with a Sanitation/Wasterwater-related Disease within the Past 2 Weeks?

	Frequency	Percent	Valid Percent	Cumulative Percent
Valid Yes	12	5.7	12.0	12.0
No	88	42.1	88.0	100.0
Total	100	47.8	100.0	
Missing System	109	52.2		
Total	209	100.0		

Table 62 How Old is the Third Son in the Household?

	Frequency	Percent	Valid Percent	Cumulative Percent
Valid 3	4	1.9	9.5	9.5
4	3	1.4	7.1	16.7
7	1	.5	2.4	19.0

	Frequency	Percent	Valid Percent	Cumulative Percent
8	1	.5	2.4	21.4
9	1	.5	2.4	23.8
10	4	1.9	9.5	33.3
11	1	.5	2.4	35.7
12	3	1.4	7.1	42.9
13	2	1.0	4.8	47.6
14	1	.5	2.4	50.0
16	4	1.9	9.5	59.5
17	2	1.0	4.8	64.3
18	5	2.4	11.9	76.2
19	3	1.4	7.1	83.3
20	1	.5	2.4	85.7
22	1	.5	2.4	88.1
23	1	.5	2.4	90.5
26	1	.5	2.4	92.9
30	2	1.0	4.8	97.6
34	1	.5	2.4	100.0
Total	42	20.1	100.0	
Missing System	167	79.9		
Total	209	100.0		

Table 63 Has the Third Son been Ill with a Sanitation/Wasterwater-related Disease within the Past 2 Weeks?

	Frequency	Percent	Valid Percent	Cumulative Percent
Valid No	41	19.6	100.0	100.0
Missing System	168	80.4		
Total	209	100.0		

Table 64 How Old is the Fourth Son in the Household?

	Frequency	Percent	Valid Percent	Cumulative Percent
Valid 2	1	.5	9.1	9.1
3	1	.5	9.1	18.2
10	2	1.0	18.2	36.4
11	1	.5	9.1	45.5
16	1	.5	9.1	54.5
17	1	.5	9.1	63.6
18	1	.5	9.1	72.7
21	1	.5	9.1	81.8

	Frequency	Percent	Valid Percent	Cumulative Percent
28	1	.5	9.1	90.9
30	1	.5	9.1	100.0
Total	11	5.3	100.0	
Missing System	198	94.7		
Total	209	100.0		

Table 65 Has the Fourth Son been Ill with a Sanitation/Wasterwater-related Disease within the Past 2 Weeks?

	Frequency	Percent	Valid Percent	Cumulative Percent
Valid No	11	5.3	100.0	100.0
Missing System	198	94.7		
Total	209	100.0		

Table 66 How Old is the Fifth Son in the Household?

	Frequency	Percent	Valid Percent	Cumulative Percent
Valid 13	1	.5	100.0	100.0
Missing System	208	99.5		
Total	209	100.0		

Table 67 Has the Fifth Son been Ill with a Sanitation/Wasterwater-related Disease within the Past 2 Weeks?

	Frequency	Percent
Missing System	209	100.0

Table 68 How Old is the Eldest Daughter in the Household?

	Frequency	Percent	Valid Percent	Cumulative Percent
Valid 1	1	.5	.6	.6
1	2	1.0	1.2	1.7
2	3	1.4	1.7	3.5
3	3	1.4	1.7	5.2
4	1	.5	.6	5.8
4	7	3.3	4.0	9.8
5	4	1.9	2.3	12.1
6	6	2.9	3.5	15.6
7	5	2.4	2.9	18.5
8	7	3.3	4.0	22.5

	Frequency	Percent	Valid Percent	Cumulative Percent
9	4	1.9	2.3	24.9
10	10	4.8	5.8	30.6
11	5	2.4	2.9	33.5
12	4	1.9	2.3	35.8
13	6	2.9	3.5	39.3
14	7	3.3	4.0	43.4
15	7	3.3	4.0	47.4
16	10	4.8	5.8	53.2
17	8	3.8	4.6	57.8
18	6	2.9	3.5	61.3
19	7	3.3	4.0	65.3
20	10	4.8	5.8	71.1
21	5	2.4	2.9	74.0
22	4	1.9	2.3	76.3
23	12	5.7	6.9	83.2
24	12	5.7	6.9	90.2
25	3	1.4	1.7	91.9
26	1	.5	.6	92.5
27	2	1.0	1.2	93.6
28	2	1.0	1.2	94.8
30	2	1.0	1.2	96.0
31	1	.5	.6	96.5
32	2	1.0	1.2	97.7
34	2	1.0	1.2	98.8
35	1	.5	.6	99.4
40	1	.5	.6	100.0
Total	173	82.8	100.0	
Missing System	36	17.2		
Total	209	100.0		

Table 69 Has the Eldest Daughter been Ill with a Sanitation/Wasterwater-related Disease within the Past 2 Weeks?

	Frequency	Percent	Valid Percent	Cumulative Percent
Valid Yes	7	3.3	4.2	4.2
No	160	76.6	95.8	100.0
Total	167	79.9	100.0	
Missing System	42	20.1		
Total	209	100.0		

Table 70 How Old is the Next Daughter in the Household?

		Frequency	Percent	Valid Percent	Cumulative Percent
Valid	0	1	.5	1.0	1.0
	1	1	.5	1.0	2.1
	2	7	3.3	7.2	9.3
	3	4	1.9	4.1	13.4
	4	10	4.8	10.3	23.7
	5	7	3.3	7.2	30.9
	6	3	1.4	3.1	34.0
	7	4	1.9	4.1	38.1
	8	2	1.0	2.1	40.2
	9	4	1.9	4.1	44.3
	10	5	2.4	5.2	49.5
	11	6	2.9	6.2	55.7
	12	2	1.0	2.1	57.7
	13	3	1.4	3.1	60.8
	14	4	1.9	4.1	64.9
	15	5	2.4	5.2	70.1
	16	2	1.0	2.1	72.2
	17	1	.5	1.0	73.2
	18	5	2.4	5.2	78.4
	19	4	1.9	4.1	82.5
	20	2	1.0	2.1	84.5
21	4	1.9	4.1	88.7	
22	3	1.4	3.1	91.8	
23	2	1.0	2.1	93.8	
25	3	1.4	3.1	96.9	
30	2	1.0	2.1	99.0	
35	1	.5	1.0	100.0	
	Total	97	46.4	100.0	
Missing	System	112	53.6		
	Total	209	100.0		

Table 71 Has the Next Daughter been Ill with a Sanitation/Wasterwater-related Disease within the Past 2 Weeks?

		Frequency	Percent	Valid Percent	Cumulative Percent
Valid	Yes	14	6.7	14.7	14.7
	No	81	38.8	85.3	100.0
	Total	95	45.5	100.0	
Missing	System	114	54.5		
	Total	209	100.0		

Table 72 How Old is the Third Daughter in the Household?

		Frequency	Percent	Valid Percent	Cumulative Percent	
Valid	1	4	1.9	13.8	13.8	
	2	2	1.0	6.9	20.7	
	3	2	1.0	6.9	27.6	
	4	1	.5	3.4	31.0	
	5	1	.5	3.4	34.5	
	7	1	.5	3.4	37.9	
	8	1	.5	3.4	41.4	
	9	2	1.0	6.9	48.3	
	10	1	.5	3.4	51.7	
	11	2	1.0	6.9	58.6	
	12	4	1.9	13.8	72.4	
	14	2	1.0	6.9	79.3	
	16	1	.5	3.4	82.8	
	19	1	.5	3.4	86.2	
	21	2	1.0	6.9	93.1	
	22	2	1.0	6.9	100.0	
	Total		29	13.9	100.0	
	Missing	System	180	86.1		
	Total		209	100.0		

Table 73 Has the Third Daughter been Ill with a Sanitation/Wasterwater-related Disease within the Past 2 Weeks?

		Frequency	Percent	Valid Percent	Cumulative Percent
Valid	Yes	2	1.0	6.9	6.9
	No	27	12.9	93.1	100.0
	Total	29	13.9	100.0	
Missing	System	180	86.1		
Total		209	100.0		

Table 74 How Old is the Fourth Daughter in the Household?

		Frequency	Percent	Valid Percent	Cumulative Percent
Valid	3	1	.5	11.1	11.1
	4	1	.5	11.1	22.2
	5	1	.5	11.1	33.3
	6	1	.5	11.1	44.4
	10	2	1.0	22.2	66.7
	12	1	.5	11.1	77.8
	17	1	.5	11.1	88.9

	Frequency	Percent	Valid Percent	Cumulative Percent
20	1	.5	11.1	100.0
Total	9	4.3	100.0	
Missing System	200	95.7		
Total	209	100.0		

Table 75 Has the Fourth Daughter been Ill with a Sanitation/Wasterwater-related Disease within the Past 2 Weeks?

	Frequency	Percent	Valid Percent	Cumulative Percent
Valid No	9	4.3	100.0	100.0
Missing System	200	95.7		
Total	209	100.0		

Table 76 How Old is the Fifth Daughter in the Household?

	Frequency	Percent	Valid Percent	Cumulative Percent
Valid 2	1	.5	33.3	33.3
4	1	.5	33.3	66.7
12	1	.5	33.3	100.0
Total	3	1.4	100.0	
Missing System	206	98.6		
Total	209	100.0		

Table 77 Has the Fifth Daughter been Ill with a Sanitation/Wasterwater-related Disease within the Past 2 Weeks?

	Frequency	Percent	Valid Percent	Cumulative Percent
Valid No	3	1.4	100.0	100.0
Missing System	206	98.6		
Total	209	100.0		

Table 78 Do You Know about Sanitation/Wastewater-related Diseases?

	Frequency	Percent	Valid Percent	Cumulative Percent
Valid Yes	66	31.6	31.6	31.6
No	143	68.4	68.4	100.0
Total	209	100.0	100.0	

Table 79 Where Did You Get this Information (option 1)?

		Frequency	Percent	Valid Percent	Cumulative Percent
Valid	Local Health Unit	21	10.0	32.8	32.8
	LGU	3	1.4	4.7	37.5
	CDA/ NGO	9	4.3	14.1	51.6
	School	6	2.9	9.4	60.9
	TV and Media	25	12.0	39.1	100.0
	Total	64	30.6	100.0	
Missing	System	145	69.4		
	Total	209	100.0		

Table 80 Where Did You Get this Information (option 2)?

		Frequency	Percent	Valid Percent	Cumulative Percent
Valid	Local Health Unit	1	.5	2.8	2.8
	LGU	9	4.3	25.0	27.8
	CDA/ NGO	2	1.0	5.6	33.3
	School	5	2.4	13.9	47.2
	Mosque	1	.5	2.8	50.0
	TV and Media	18	8.6	50.0	100.0
	Total	36	17.2	100.0	
Missing	System	173	82.8		
	Total	209	100.0		

Table 81 Where Did You Get this Information (option 3)?

		Frequency	Percent	Valid Percent	Cumulative Percent
Valid	Mosque	1	.5	4.8	4.8
	TV and Media	17	8.1	81.0	85.7
	Other	3	1.4	14.3	100.0
	Total	21	10.0	100.0	
Missing	System	188	90.0		
	Total	209	100.0		

Table 82 Do You Drink Tap Water?

		Frequency	Percent	Valid Percent	Cumulative Percent
Valid	Yes	204	97.6	98.1	98.1
	No	4	1.9	1.9	100.0
	Total	208	99.5	100.0	
Missing	System	1	.5		
Total		209	100.0		

Table 83 Do You Cook with Tap Water?

		Frequency	Percent	Valid Percent	Cumulative Percent
Valid	Yes	204	97.6	98.1	98.1
	No	4	1.9	1.9	100.0
	Total	208	99.5	100.0	
Missing	System	1	.5		
Total		209	100.0		

Table 84 Do You Use Tap Water for Bathing and Washing?

		Frequency	Percent	Valid Percent	Cumulative Percent
Valid	yes	204	97.6	98.1	98.1
	No	4	1.9	1.9	100.0
	Total	208	99.5	100.0	
Missing	System	1	.5		
Total		209	100.0		

Table 85 Do You Use Tap Water to Clean Food?

		Frequency	Percent	Valid Percent	Cumulative Percent
Valid	Yes	205	98.1	98.6	98.6
	No	3	1.4	1.4	100.0
	Total	208	99.5	100.0	
Missing	System	1	.5		
Total		209	100.0		

Table 86 Do You Use Tap Water for Washing Dishes?

		Frequency	Percent	Valid Percent	Cumulative Percent
Valid	Yes	205	98.1	98.1	98.1
	No	4	1.9	1.9	100.0
	Total	209	100.0	100.0	

Table 87 Do You Use Tap Water to Wash Clothes?

		Frequency	Percent	Valid Percent	Cumulative Percent
Valid	Yes	204	97.6	98.1	98.1
	No	4	1.9	1.9	100.0
	Total	208	99.5	100.0	
Missing	System	1	.5		
	Total	209	100.0		

Table 88 Do You Use Tap Water for Housecleaning?

		Frequency	Percent	Valid Percent	Cumulative Percent
Valid	Yes	205	98.1	98.1	98.1
	No	4	1.9	1.9	100.0
	Total	209	100.0	100.0	

Table 89 Do You Use Tap Water for Sprinkling the Street?

		Frequency	Percent	Valid Percent	Cumulative Percent
Valid	Yes	203	97.1	97.1	97.1
	No	6	2.9	2.9	100.0
	Total	209	100.0	100.0	

Table 90 Do You Use Tap Water to Flush the Toilet?

		Frequency	Percent	Valid Percent	Cumulative Percent
Valid	Yes	205	98.1	98.1	98.1
	No	4	1.9	1.9	100.0
	Total	209	100.0	100.0	

Table 91 Do You Use Tap Water for Other Activities?

		Frequency	Percent	Valid Percent	Cumulative Percent
Valid	Yes	1	.5	100.0	100.0
Missing	System	208	99.5		
	Total	209	100.0		

Table 92 Is the Water Supply Regular?

		Frequency	Percent	Valid Percent	Cumulative Percent
Valid	Yes	101	48.3	49.8	49.8
	No	102	48.8	50.2	100.0
	Total	203	97.1	100.0	
Missing	System	6	2.9		
	Total	209	100.0		

Table 93 How Many Times, on Average per Month, is the Water Supply Interrupted?

		Frequency	Percent	Valid Percent	Cumulative Percent
Valid	1.00	3	1.4	2.9	2.9
	2.00	18	8.6	17.6	20.6
	3.00	17	8.1	16.7	37.3
	4.00	48	23.0	47.1	84.3
	5.00	5	2.4	4.9	89.2
	6.00	8	3.8	7.8	97.1
	8.00	1	.5	1.0	98.0
	9.00	1	.5	1.0	99.0
	10.00	1	.5	1.0	100.0
	Total	102	48.8	100.0	
Missing	System	107	51.2		
	Total	209	100.0		

Table 94 How Long does Each Interruption Last?

		Frequency	Percent	Valid Percent	Cumulative Percent
Valid	1.00	14	6.7	13.7	13.7
	2.00	29	13.9	28.4	42.2
	3.00	34	16.3	33.3	75.5
	4.00	19	9.1	18.6	94.1
	5.00	4	1.9	3.9	98.0
	6.00	2	1.0	2.0	100.0

	Frequency	Percent	Valid Percent	Cumulative Percent
Total	102	48.8	100.0	
Missing System	107	51.2		
Total	209	100.0		

Table 95 In Total, How Many Hours of Water Interruption Occur in the Summer Season?

	Frequency	Percent	Valid Percent	Cumulative Percent
Valid 9.00	2	1.0	2.0	2.0
12.00	4	1.9	3.9	5.9
18.00	4	1.9	3.9	9.8
24.00	15	7.2	14.7	24.5
36.00	11	5.3	10.8	35.3
48.00	18	8.6	17.6	52.9
54.00	5	2.4	4.9	57.8
60.00	1	.5	1.0	58.8
72.00	23	11.0	22.5	81.4
90.00	2	1.0	2.0	83.3
96.00	5	2.4	4.9	88.2
108.00	2	1.0	2.0	90.2
120.00	4	1.9	3.9	94.1
144.00	4	1.9	3.9	98.0
216.00	1	.5	1.0	99.0
240.00	1	.5	1.0	100.0
Total	102	48.8	100.0	
Missing System	107	51.2		
Total	209	100.0		

Table 96 On Average, How Many Times is the Water Interrupted during the Winter Months?

	Frequency	Percent	Valid Percent	Cumulative Percent
Valid 1.00	2	1.0	2.0	2.0
2.00	12	5.7	11.8	13.7
3.00	16	7.7	15.7	29.4
4.00	44	21.1	43.1	72.5
5.00	4	1.9	3.9	76.5
6.00	20	9.6	19.6	96.1
7.00	1	.5	1.0	97.1
8.00	1	.5	1.0	98.0
10.00	2	1.0	2.0	100.0

	Frequency	Percent	Valid Percent	Cumulative Percent
Total	102	48.8	100.0	
Missing System	107	51.2		
Total	209	100.0		

Table 97 In the Winter, How Many Hours is the Water Off Each Time?

	Frequency	Percent	Valid Percent	Cumulative Percent
Valid 1.00	9	4.3	8.8	8.8
2.00	26	12.4	25.5	34.3
3.00	37	17.7	36.3	70.6
4.00	18	8.6	17.6	88.2
5.00	10	4.8	9.8	98.0
6.00	2	1.0	2.0	100.0
Total	102	48.8	100.0	
Missing System	107	51.2		
Total	209	100.0		

Table 98 In Winter, How Many Total Hours is the Water Interrupted?

	Frequency	Percent	Valid Percent	Cumulative Percent
Valid 12.00	3	1.4	2.9	2.9
16.00	1	.5	1.0	3.9
18.00	2	1.0	2.0	5.9
24.00	7	3.3	6.9	12.7
36.00	14	6.7	13.7	26.5
48.00	17	8.1	16.7	43.1
54.00	6	2.9	5.9	49.0
60.00	1	.5	1.0	50.0
72.00	10	4.8	9.8	59.8
76.00	1	.5	1.0	60.8
84.00	1	.5	1.0	61.8
90.00	3	1.4	2.9	64.7
96.00	9	4.3	8.8	73.5
104.00	3	1.4	2.9	76.5
105.00	1	.5	1.0	77.5
108.00	5	2.4	4.9	82.4
120.00	6	2.9	5.9	88.2
144.00	7	3.3	6.9	95.1
180.00	4	1.9	3.9	99.0
300.00	1	.5	1.0	100.0

	Frequency	Percent	Valid Percent	Cumulative Percent
Total	102	48.8	100.0	
Missing System	107	51.2		
Total	209	100.0		

Table 99 In One Year, How Many Total Hours is the Water Interrupted?

	Frequency	Percent	Valid Percent	Cumulative Percent
Valid 24.00	2	1.0	2.0	2.0
30.00	2	1.0	2.0	3.9
42.00	1	.5	1.0	4.9
48.00	5	2.4	4.9	9.8
54.00	1	.5	1.0	10.8
60.00	4	1.9	3.9	14.7
72.00	11	5.3	10.8	25.5
78.00	1	.5	1.0	26.5
84.00	1	.5	1.0	27.5
90.00	3	1.4	2.9	30.4
96.00	6	2.9	5.9	36.3
102.00	1	.5	1.0	37.3
108.00	2	1.0	2.0	39.2
120.00	5	2.4	4.9	44.1
124.00	1	.5	1.0	45.1
126.00	4	1.9	3.9	49.0
138.00	1	.5	1.0	50.0
140.00	1	.5	1.0	51.0
144.00	8	3.8	7.8	58.8
147.00	1	.5	1.0	59.8
150.00	2	1.0	2.0	61.8
152.00	2	1.0	2.0	63.7
156.00	5	2.4	4.9	68.6
158.00	1	.5	1.0	69.6
162.00	1	.5	1.0	70.6
168.00	1	.5	1.0	71.6
178.00	1	.5	1.0	72.5
180.00	3	1.4	2.9	75.5
190.00	1	.5	1.0	76.5
192.00	7	3.3	6.9	83.3
210.00	1	.5	1.0	84.3
216.00	6	2.9	5.9	90.2
228.00	1	.5	1.0	91.2
234.00	1	.5	1.0	92.2

	Frequency	Percent	Valid Percent	Cumulative Percent
240.00	1	.5	1.0	93.1
264.00	1	.5	1.0	94.1
276.00	3	1.4	2.9	97.1
300.00	1	.5	1.0	98.0
360.00	1	.5	1.0	99.0
540.00	1	.5	1.0	100.0
Total	102	48.8	100.0	
Missing System	107	51.2		
Total	209	100.0		

Table 100 What is Your First Choice as a Substitute for Tap Water?

	Frequency	Percent	Valid Percent	Cumulative Percent
Valid From stored water	87	41.6	71.3	71.3
From a private well/hand pump in the house or yard	6	2.9	4.9	76.2
From a public well/hand-pump in the street	29	13.9	23.8	100.0
Total	122	58.4	100.0	
Missing System	87	41.6		
Total	209	100.0		

Table 101 Percent of Residents Using that Option

	Frequency	Percent	Valid Percent	Cumulative Percent
Valid 10	2	1.0	1.6	1.6
30	3	1.4	2.5	4.1
40	5	2.4	4.1	8.2
50	16	7.7	13.1	21.3
60	17	8.1	13.9	35.2
70	9	4.3	7.4	42.6
80	17	8.1	13.9	56.6
90	2	1.0	1.6	58.2
100	51	24.4	41.8	100.0
Total	122	58.4	100.0	
Missing System	87	41.6		
Total	209	100.0		

Table 102 For Your First Choice as a Substitute to Tap Water, How Long Does it Take You to Make the Trip for Water?

		Frequency	Percent	Valid Percent	Cumulative Percent
Valid	2	3	1.4	8.6	8.6
	3	2	1.0	5.7	14.3
	5	2	1.0	5.7	20.0
	10	17	8.1	48.6	68.6
	15	8	3.8	22.9	91.4
	20	1	.5	2.9	94.3
	30	2	1.0	5.7	100.0
Total		35	16.7	100.0	
Missing	System	174	83.3		
Total		209	100.0		

Table 103 What is Your Second Choice as a Substitute for Tap Water?

		Frequency	Percent	Valid Percent	Cumulative Percent
Valid	From a private well/ hand-pump in the house or yard	13	6.2	18.8	18.8
	From a public well/hand-pump in the street	56	26.8	81.2	100.0
	Total	69	33.0	100.0	
Missing	System	140	67.0		
Total		209	100.0		

Table 104 Percent of Residents Using the Second Option

		Frequency	Percent	Valid Percent	Cumulative Percent
Valid	10	2	1.0	2.9	2.9
	20	16	7.7	23.2	26.1
	30	9	4.3	13.0	39.1
	40	17	8.1	24.6	63.8
	50	16	7.7	23.2	87.0
	60	5	2.4	7.2	94.2
	70	3	1.4	4.3	98.6
	90	1	.5	1.4	100.0
	Total	69	33.0	100.0	
Missing	System	140	67.0		
Total		209	100.0		

Table 105 For Your Second Choice as a Substitute to Tap Water, How Long Does it Take You to Make the Trip for Water?

		Frequency	Percent	Valid Percent	Cumulative Percent
Valid	2	3	1.4	4.3	4.3
	3	7	3.3	10.1	14.5
	4	2	1.0	2.9	17.4
	5	6	2.9	8.7	26.1
	6	4	1.9	5.8	31.9
	8	4	1.9	5.8	37.7
	10	21	10.0	30.4	68.1
	15	21	10.0	30.4	98.6
	30	1	.5	1.4	100.0
	Total	69	33.0	100.0	
Missing	System	140	67.0		
Total	209	100.0			

Table 106 How Often do You Make the Trip for Water?

		Frequency	Percent	Valid Percent	Cumulative Percent
Valid	1	3	1.4	4.3	4.3
	2	22	10.5	31.9	36.2
	3	26	12.4	37.7	73.9
	4	14	6.7	20.3	94.2
	5	2	1.0	2.9	97.1
	7	1	.5	1.4	98.6
	10	1	.5	1.4	100.0
	Total	69	33.0	100.0	
Missing	System	140	67.0		
Total	209	100.0			

Table 107 What Problems are there with Your First Choice as a Substitute for Tap Water?

		Frequency	Percent	Valid Percent	Cumulative Percent
Valid	Limited quantity	36	17.2	32.1	32.1
	Quality, bad look/taste/odor	61	29.2	54.5	86.6
	Inconvenient/ time spent fetching and storing	4	1.9	3.6	90.2

	Frequency	Percent	Valid Percent	Cumulative Percent
Health effects/diseases	2	1.0	1.8	92.0
No problem	9	4.3	8.0	100.0
Total	112	53.6	100.0	
Missing System	97	46.4		
Total	209	100.0		

Table 108 What Problems are there with Your Second Choice as a Substitute for Tap Water?

	Frequency	Percent	Valid Percent	Cumulative Percent
Valid Quality, bad look/taste/odor	36	17.2	36.7	36.7
Inconvenient/ time spent fetching and storing	47	22.5	48.0	84.7
Health effects/diseases	13	6.2	13.3	98.0
Mosquitoes/ flies/insects	1	.5	1.0	99.0
No problem	1	.5	1.0	100.0
Total	98	46.9	100.0	
Missing System	111	53.1		
Total	209	100.0		

Table 109 What Problems are there with Your Third Choice as a Substitute for Tap Water?

	Frequency	Percent	Valid Percent	Cumulative Percent
Valid Quality, bad look/taste/odor	1	.5	1.4	1.4
Inconvenient/ time spent fetching and storing	29	13.9	40.3	41.7
Health effects/diseases	35	16.7	48.6	90.3
Mosquitoes/ flies/insects	7	3.3	9.7	100.0
Total	72	34.4	100.0	
Missing System	137	65.6		
Total	209	100.0		

Table 110 Do You Have an Electric Water Pump?

		Frequency	Percent	Valid Percent	Cumulative Percent
Valid	yes	11	5.3	5.3	5.3
	No	197	94.3	94.7	100.0
	Total	208	99.5	100.0	
Missing	System	1	.5		
	Total	209	100.0		

Table 111 How Much are You Willing to Pay for Improved Water Service?

		Frequency	Percent	Valid Percent	Cumulative Percent
Valid	Nothing/don't know/can't decide	117	56.0	59.1	59.1
	2.00	2	1.0	1.0	60.1
	10.00	62	29.7	31.3	91.4
	20.00	13	6.2	6.6	98.0
	40.00	1	.5	.5	98.5
	60.00	3	1.4	1.5	100.0
	Total	198	94.7	100.0	
	Missing	System	11	5.3	
Total		209	100.0		

Table 112 On Average, How Much Do You Pay Each Month for Water?

		Frequency	Percent	Valid Percent	Cumulative Percent
Valid	.00	1	.5	.5	.5
	2.00	2	1.0	1.0	1.5
	3.00	4	1.9	1.9	3.4
	3.50	2	1.0	1.0	4.4
	4.00	16	7.7	7.8	12.1
	5.00	38	18.2	18.4	30.6
	6.00	8	3.8	3.9	34.5
	7.00	17	8.1	8.3	42.7
	7.50	1	.5	.5	43.2
	8.00	19	9.1	9.2	52.4
	9.00	2	1.0	1.0	53.4
	10.00	27	12.9	13.1	66.5
	11.00	1	.5	.5	67.0
	12.00	11	5.3	5.3	72.3
	13.00	4	1.9	1.9	74.3
14.00	1	.5	.5	74.8	

	Frequency	Percent	Valid Percent	Cumulative Percent
15.00	23	11.0	11.2	85.9
17.00	5	2.4	2.4	88.3
18.00	2	1.0	1.0	89.3
20.00	11	5.3	5.3	94.7
21.00	1	.5	.5	95.1
22.00	1	.5	.5	95.6
25.00	4	1.9	1.9	97.6
27.00	1	.5	.5	98.1
30.00	2	1.0	1.0	99.0
31.00	1	.5	.5	99.5
45.00	1	.5	.5	100.0
Total	206	98.6	100.0	
Missing System	3	1.4		
Total	209	100.0		

Table 113 On What Kind of Street is Your House?

	Frequency	Percent	Valid Percent	Cumulative Percent
Valid Main	92	44.0	44.0	44.0
Side	94	45.0	45.0	89.0
Lane	23	11.0	11.0	100.0
Total	209	100.0	100.0	

Table 114 What is Your Sex?

	Frequency	Percent	Valid Percent	Cumulative Percent
Valid Man	70	33.5	33.5	33.5
Woman	139	66.5	66.5	100.0
Total	209	100.0	100.0	

Table 115 Are You the Head of the Household?

	Frequency	Percent	Valid Percent	Cumulative Percent
Valid Yes	65	31.1	31.1	31.1
No	144	68.9	68.9	100.0
Total	209	100.0	100.0	

Table 116 What is the Highest Level of Education You Have Completed?

		Frequency	Percent	Valid Percent	Cumulative Percent
Valid	Illiterate	31	14.8	14.8	14.8
	Read\write	11	5.3	5.3	20.1
	Primary certificate	6	2.9	2.9	23.0
	Preparatory certificate	4	1.9	1.9	24.9
	Medium certificate	99	47.4	47.4	72.2
	Above medium certificate	21	10.0	10.0	82.3
	High certificate	37	17.7	17.7	100.0
	Total	209	100.0	100.0	

Table 117 What is the Highest Level of Education Completed by the Head of the Household?

		Frequency	Percent	Valid Percent	Cumulative Percent
Valid	Illiterate	31	14.8	14.9	14.9
	Read\write	32	15.3	15.4	30.3
	Primary certificate	7	3.3	3.4	33.7
	Preparatory certificate	15	7.2	7.2	40.9
	Medium certificate	68	32.5	32.7	73.6
	Above medium certificate	16	7.7	7.7	81.3
	High certificate	39	18.7	18.8	100.0
	Total	208	99.5	100.0	
Missing	System	1	.5		
	Total	209	100.0		

Table 118 How Many People Live in the Household?

		Frequency	Percent	Valid Percent	Cumulative Percent
Valid	2	9	4.3	4.3	4.3
	3	19	9.1	9.2	13.5
	4	38	18.2	18.4	31.9
	5	77	36.8	37.2	69.1
	6	38	18.2	18.4	87.4
	7	17	8.1	8.2	95.7

	Frequency	Percent	Valid Percent	Cumulative Percent
8	8	3.8	3.9	99.5
11	1	.5	.5	100.0
Total	207	99.0	100.0	
Missing System	2	1.0		
Total	209	100.0		

Table 119 How Many Households are in the Dwelling?

	Frequency	Percent	Valid Percent	Cumulative Percent
Valid 1	121	57.9	58.5	58.5
2	47	22.5	22.7	81.2
3	23	11.0	11.1	92.3
4	13	6.2	6.3	98.6
5	3	1.4	1.4	100.0
Total	207	99.0	100.0	
Missing System	2	1.0		
Total	209	100.0		

Table 120 What Type of House is the Dwelling?

	Frequency	Percent	Valid Percent	Cumulative Percent
Valid Rural house	113	54.1	54.6	54.6
Building with apartments	94	45.0	45.4	100.0
Total	207	99.0	100.0	
Missing System	2	1.0		
Total	209	100.0		