



**United States Agency for International
Development**



Ministry of Water Resources & Irrigation

LIFE Integrated Water Resources Management
Task Order No. 802
EPIQ II: Contract No. EPP-T-802-03-00013-00

Groundwater Sector Hydro-Geologic Database

User Manual # 6

April 2008

This publication was produced for review by United States Agency for International Development. It was prepared by:



International Resources Group
In association with EPIQ II Consortium

User Manual

Groundwater Sector Hydro-Geologic Database

Prepared by:

Dr. Hanan Ezzat Mahmoud, Ground Water Sector

April 2008

Table of Contents

Introduction.....	1
Installing the Groundwater Database (GWDB).....	1
Wells Data View/Entry	3
Wells Data Entry.....	4
Reports	5

List of Figures

Figure 1: GW Database Properties	1
Figure 2: Run Command.....	2
Figure 3: References Table	3
Figure 4: Main GW Database Screen	3
Figure 5: Wells Screen.....	4
Figure 6: Edit Menu Screen	4
Figure 7: Wells data entry screen.....	5
Figure 8: Integrated Directorates Reports.....	5
Figure 9: Export Screen	6
Figure 10: View/Export Data Screen 1	6
Figure 11: View/Export Data Screen 2.....	7

Introduction

Groundwater database containing groundwater data from all points of water that fall under the supervision of the groundwater sector, which that point could be of different types of water wells, or different kinds of dams or desalination, or reservoirs.

Installing the Groundwater Database (GWDB)

1. Copy the file named database of the program CD (C:\) and save it on the following path on your PC (path C:\ \ database) and that path shouldn't be changed as the database links popular programming refers to this site and the relocation of the file to any other place adversely affect the work of the program.
2. Select all the files inside C:\ \ database Remove the label from Read only as illustrated Fig(1)

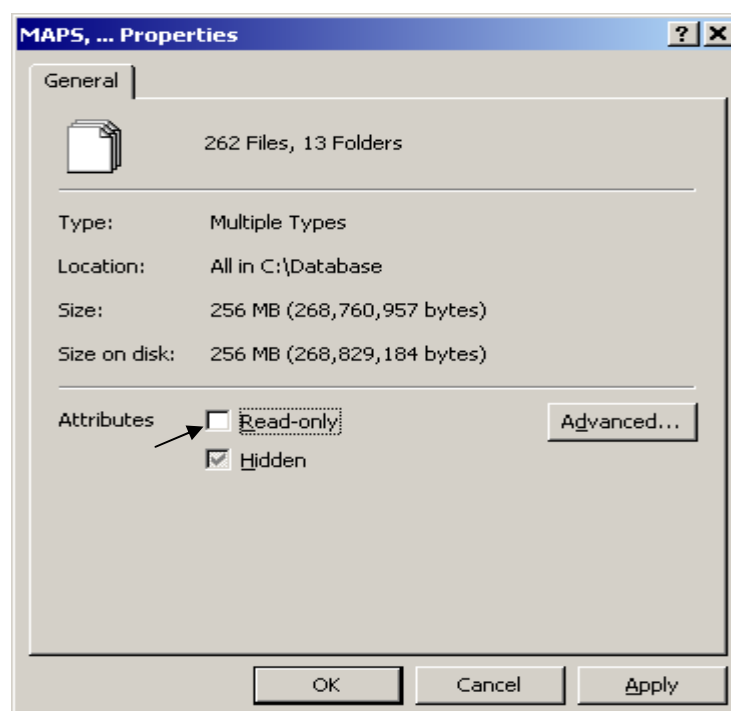


Figure 1: GW Database Properties

- From Start icon on your pc go to Run from the list and then select Run and type down the following "regsvr32 C: \ database \ shplib.dll" and then click OK as illustrated Fig (2).

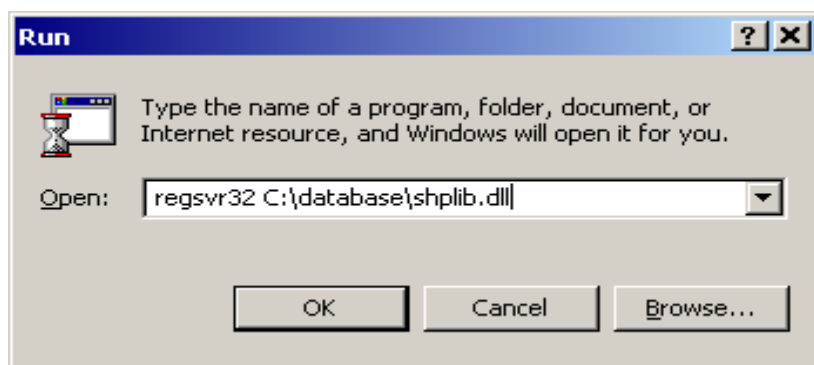


Figure 2: Run Command

- Repeat the previous step but with this new file "regsvr32 c: \ database \ pip2.ocx" then finally with "regsvr32 c: \ database \ stuyf.dll." Then click OK.
- Open the file C: \ database then click Shapecontour.exe, click on the Next button and then close the page without making any modification.
- Install ArcExplorer 2.0 from the file C: \ database \ ArcExplorersetup
- Open database GWSdatabase then click View from the list and then chose Design View from the list once again select View Code from the list and then select the Tools References and then make sure that each of the following references were Selected, also confirmed the authenticity of the site as indicated beside each of them as shown as (3):

- ✓ Royal Haskoning Stuyfzand Classification (c:\database\stuyf.dll)
- ✓ Royal Haskoning Piper Control (c:\database\pip2.ocx)
- ✓ Shapecontour (c:\database\shapecontour.tlb)
- ✓ Royal Haskoning shapes (c:\database\shplib.dll)
- ✓ ESRI (c:\program files\esri\arcexplorer 2.0)
- ✓ Microsoft DAO 3.6
- ✓ Microsoft ActiveX data
- ✓ OLE automation
- ✓ MS Access 9.0 object library
- ✓ Visual basic

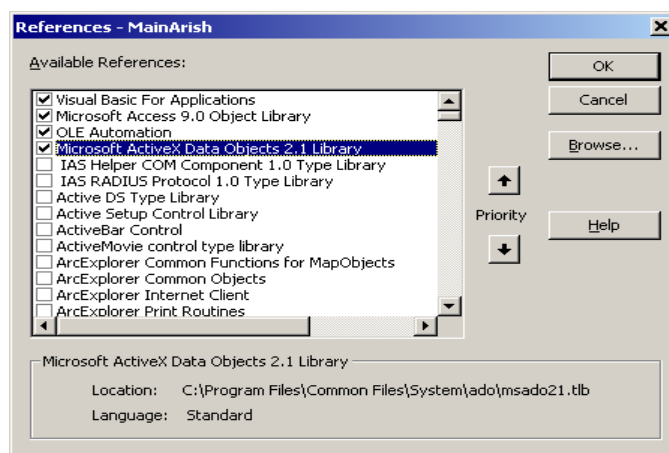


Figure 3: References Table

8. Create a shortcut to the database on the desktop

Wells Data View/Entry

Wells are one of the most important and Prevalent water structures. Home contains the database to link popular contains a numbers of wells stored on the database as shown as No. (4)

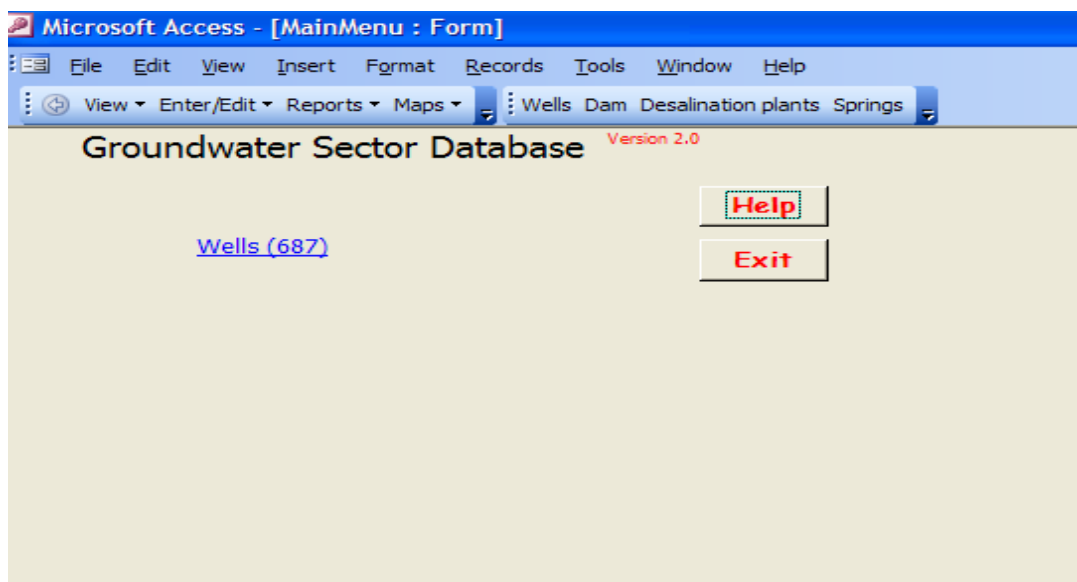


Figure 4: Main GW Database Screen

Clicking on the link shown in fig No. (4) takes us to the next page as shown as No. (5)

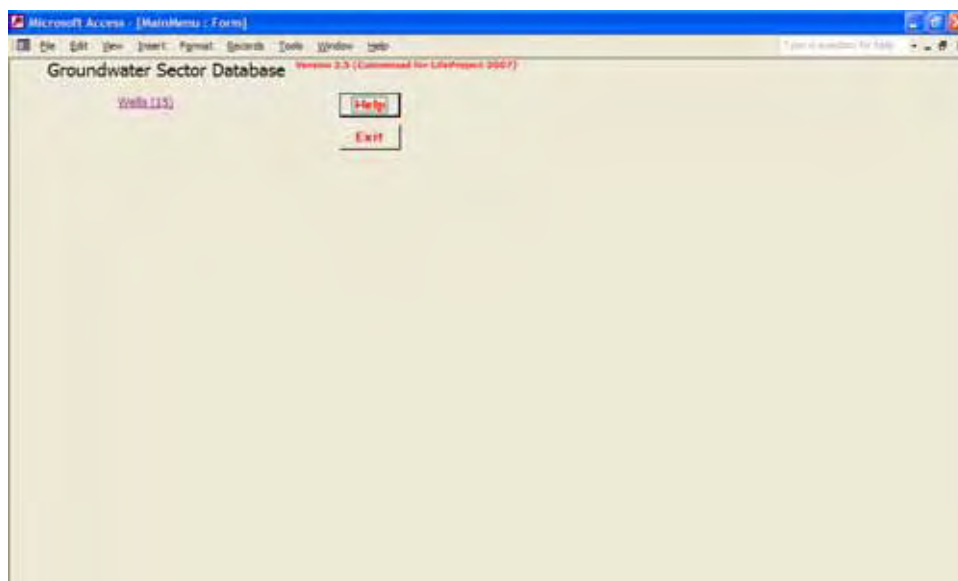


Figure 5: Wells Screen

By Clicking the link shown on the last figure we can retrieve the wells data that have been stored before and even We can store new data to the database as shown in figure no. (6)

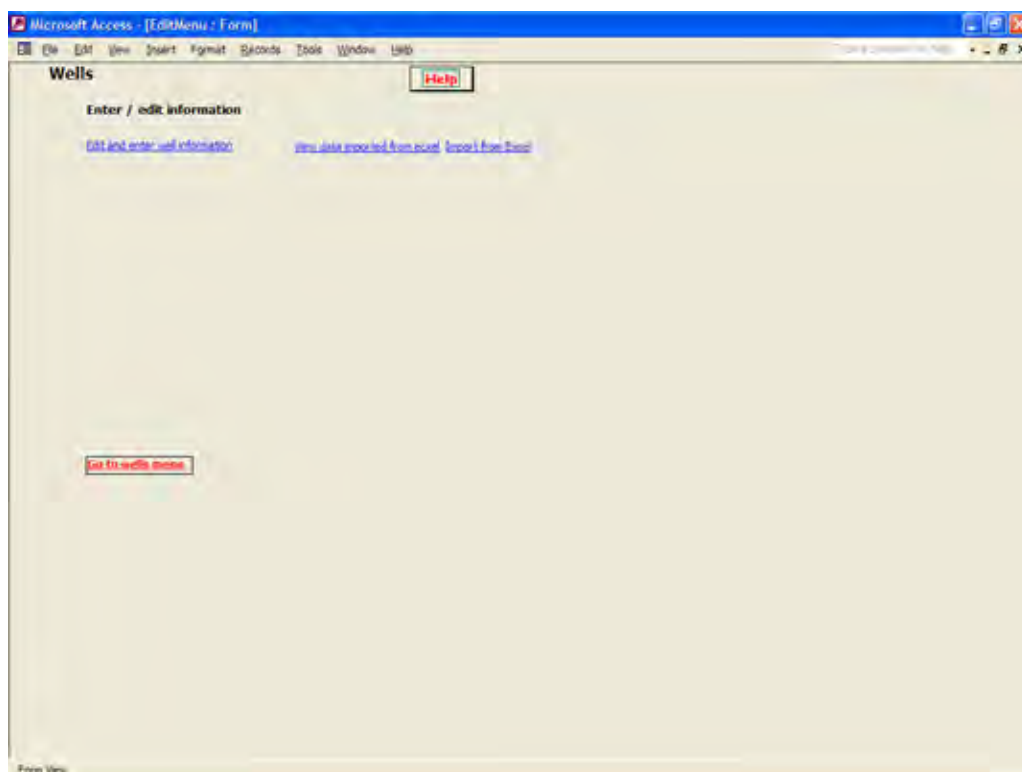


Figure 6: Edit Menu Screen Wells Data Entry

By clicking (Edit and enter Well Information) shown in figure no.(6) it moves us to page entry form shown in figure no.(7).We can also check and import the data from excel file by clicking the two linked text shown in figure no. (6).

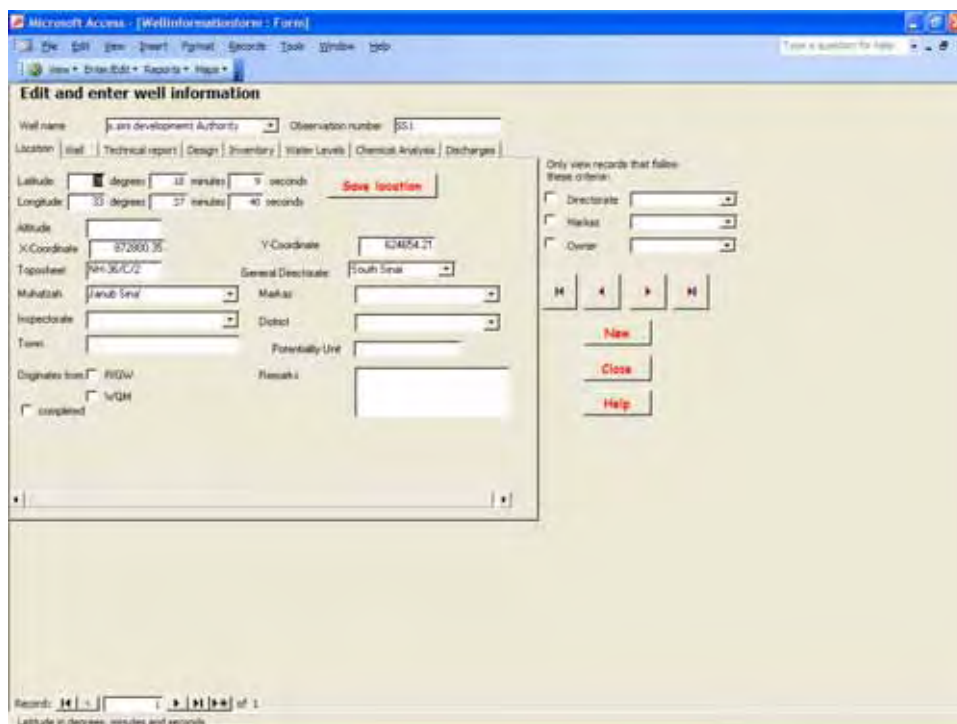


Figure 7: Wells data entry screen

Reports

This page contains special reports designed for each integrated directorates as shown in figure No. (8)

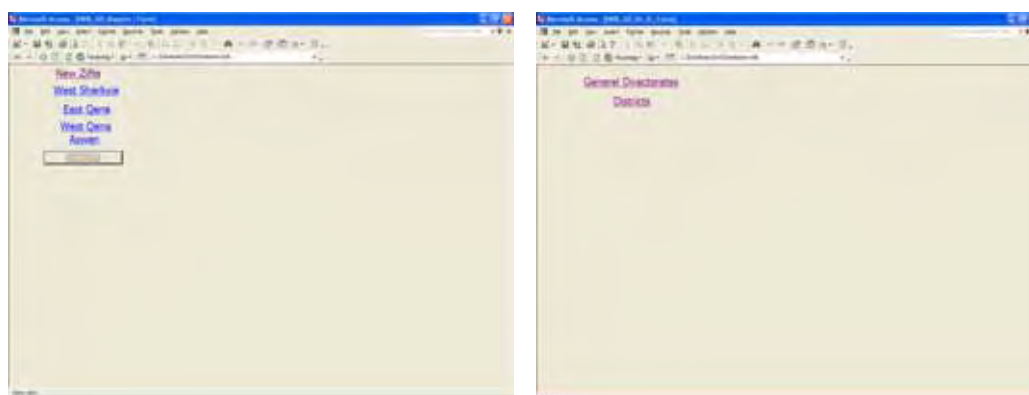


Figure 8: Integrated Directorates Reports

And by clicking on the integrated directorates' name takes us to the page showing the integrated directorates' stored wells which can be also exported to an Excel file or to be printed as shown on figure no. (9)

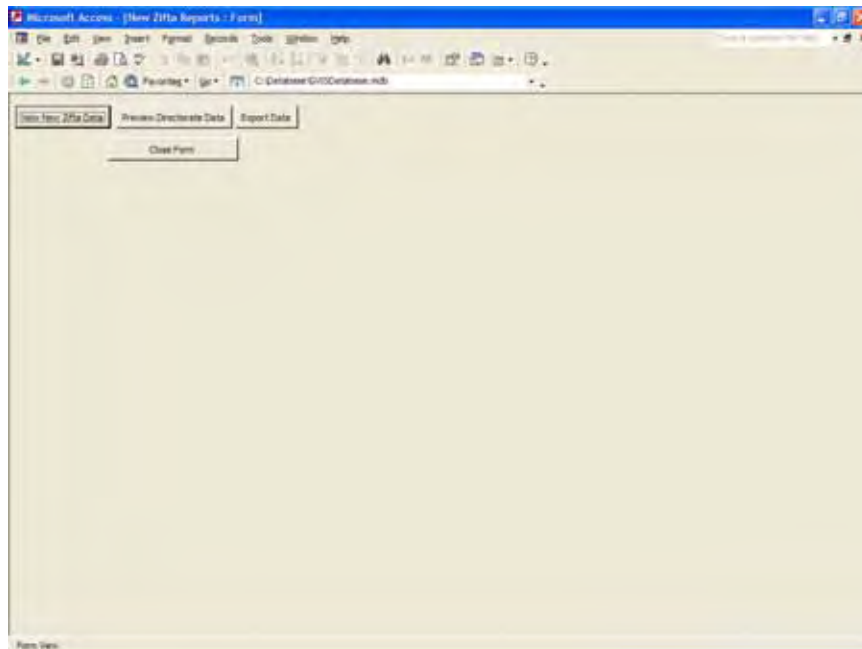


Figure 9: Export Screen

We can print and export data to excel for all/specific department/district through pages shown in figure (10) and figure (11).

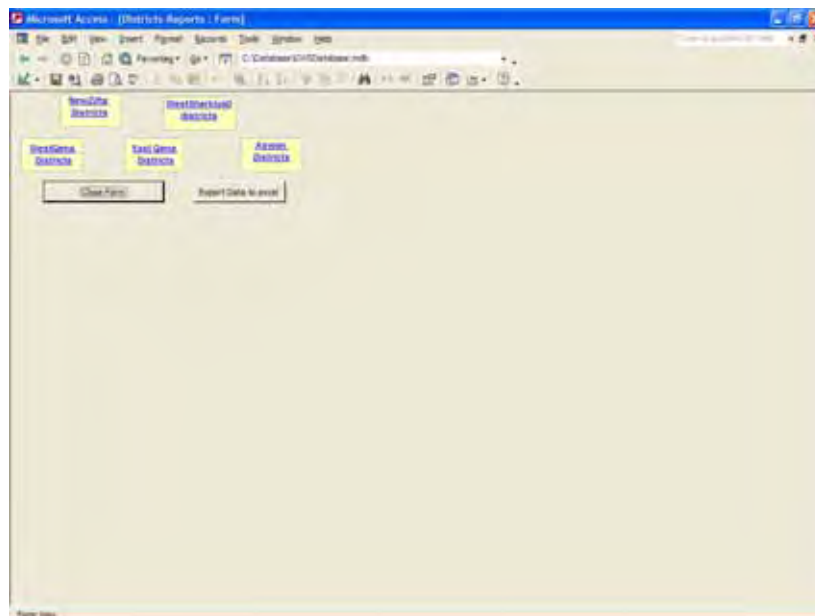


Figure 10:

View/Export Data Screen 1

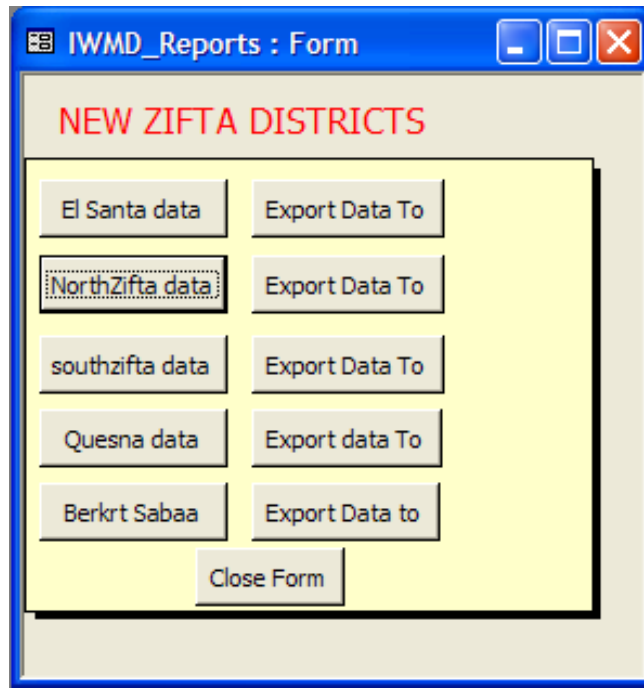


Figure 11: View/Export Data Screen 2